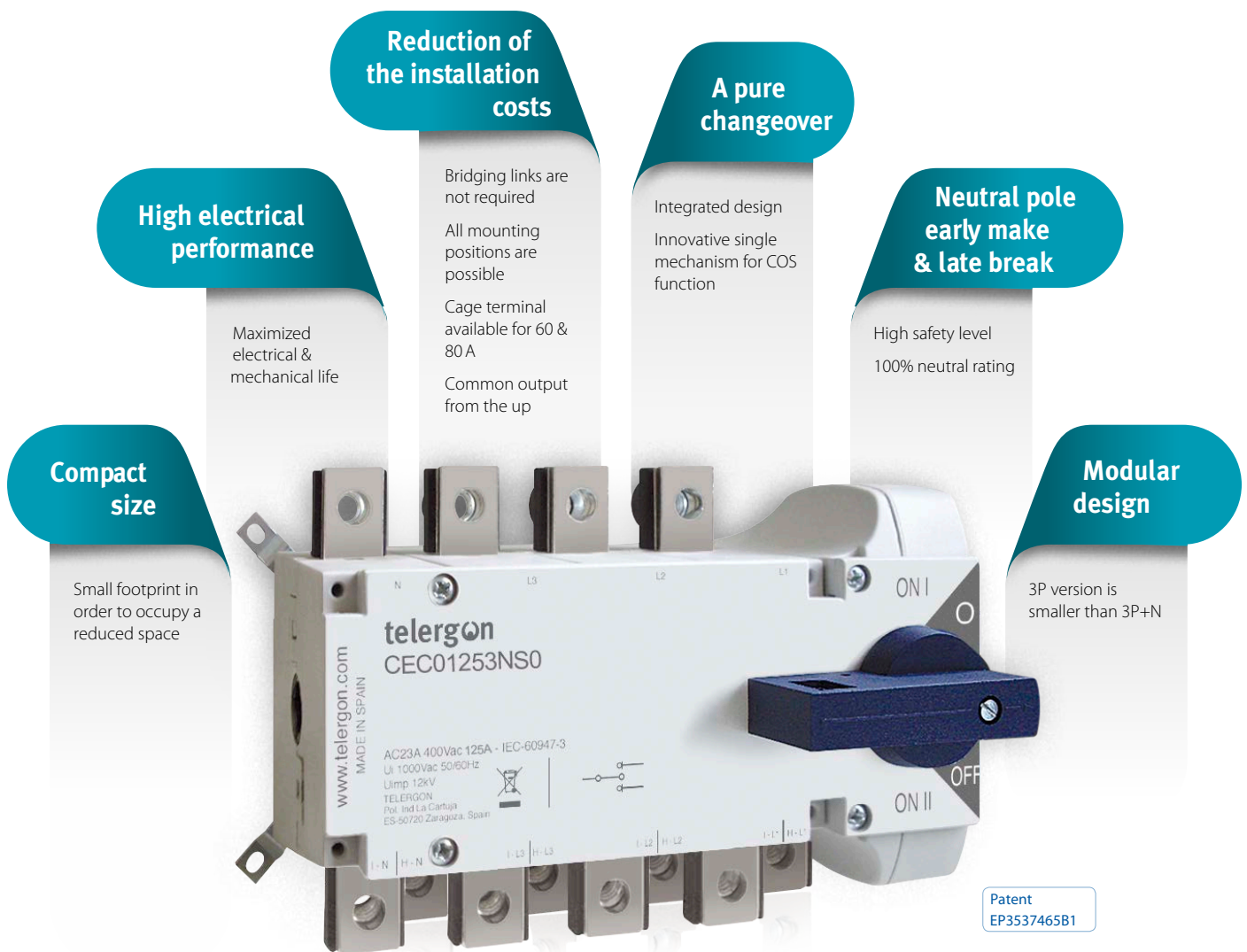


CEC series

The most compact and efficient changeover

The most compact and efficient changeover of Telergon –CEC series– is an innovative product developed to improve our competitiveness within our low amperage changeovers portfolio.

Available from 63 to 125A in 3P and 3P+N versions, it has been designed as a pure changeover for low voltage distribution circuits and motors.



► RANGE

Amp.	Connection	Configuration*		Handle		Accessories			
		3P	3P+N	External	Direct	Shaft extensions	Auxiliary contacts	Phase barriers	
								3P	3P+N
63		CEC00633PB0	CEC00633NB0	DCELAB1	D5LSI01	DS-EP04 (L: 250)	DCEAUB1	DCECUB1	DCECUB2
		CEC00633PS0	CEC00633NS0						
80		CEC00803PB0	CEC00803NB0						
		CEC00803PS0	CEC00803NS0						
100		CEC01003PS0	CEC01003NS0						
125		CEC01253PS0	CEC01253NS0						

*Enclosed solutions are also available. Please, consult for more information.

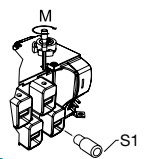
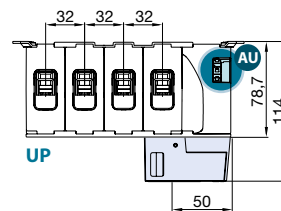
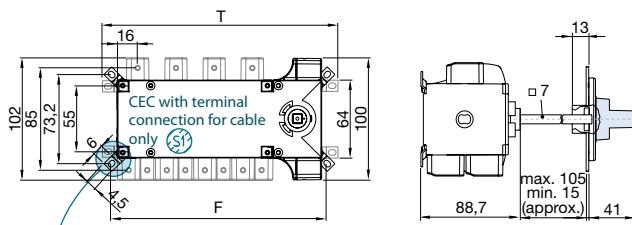
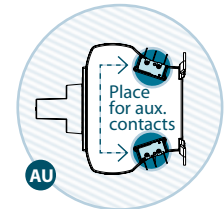
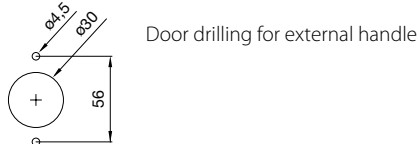
TECHNICAL DATA

According to IEC 60947-3		Type		63 A	80 A	100 A	125 A
Electrical characteristics	Rated thermal current	Ith	40°C	63 A	80 A	100 A	125 A
			50°C	63 A	80 A	100 A	125 A
			60°C	63 A	80 A	100 A	125 A
	Rated insulation voltage	Ui		1000V			
Rated impulse withstand voltage	Uimp		8 kV				
Short circuit behaviour	Rated operational current	le	Ue 400V	AC21A 63 A	80 A	100 A	125 A
	Rated short-circuit making capacity**	Icm	kA (peak)	1,5	1,5	2,9	2,9
	Rated short-time withstand current (1s)	Icw	kA rms	1	1	2	2
Mechanical data	Number of mechanical operations (according to standard)	Cycles		10000			8000
	Maximum weight	3P 3P+N	Kg	1,0 1,2	1,0 1,2	1,1 1,3	1,1 1,3

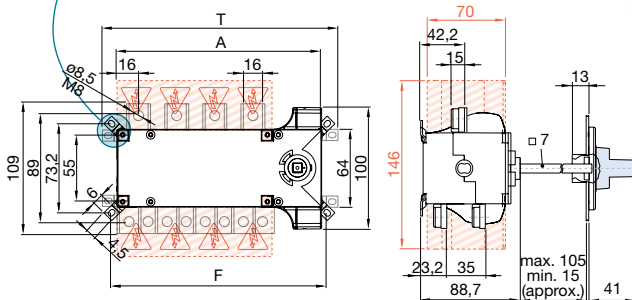
**Without limiting protective device (short-circuit maintained 50-100 ms)

DIMENSIONS

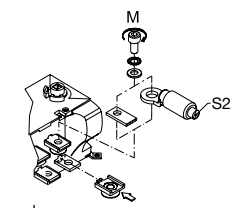
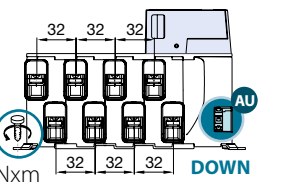
Due to the continuous improvement & modifications of our products, the details included in this catalogue can be modified at any time without prior consent.



S1 max (Cu)	M
mm ²	Allen Nxm
63 A	25 M8 3
80 A	



M4-1,5 Nxm



S2 max (Cu)	H max (Cu)	L max (Cu)	M
mm ²	mm	mm	Allen Nxm
63 A	35	3	16 M8 6
80 A			
100 A			
125 A	50***	3	19

	A		F		T	
	45°	90°	45°	90°	45°	90°
mm	mm	mm	mm	mm	mm	mm
3P	136	151,8	152,7	158	161,7	
4P	168	177,2	184,7	190	193,7	

M4-1,5 Nxm

***Use phase barriers in order to keep the clearance in air distances.