

AC Switch - disconnectors

Switch - disconnectors with high operating load capacity and a high level disconnection insulation; high reliability and safety in abnormal situations, available in different construction models, with a wide range of currents and several accessories.

series **S5|S5M|S5N** series **S6|S6N** series **CIS**

According to:
IEC 60947-3
IEC 61439-2
RoHS



Testing and approvals:



The switch - disconnectors in its different series, are manufactured with high safety self-extinguishing materials, providing an excellent level of electrical insulation, low smoke emission and high resistance to electromechanical stress.

They comply with environmental requirements and undergo strict quality controls for a reliable product that meets the most demanding requirements.

They consist of a sandwich-type body containing self-cleaning blade type contacts, with pre-arc zones to ensure long term, fault-free energy transmission and coated with silver alloy for long electromechanical life. The detent mechanism provides quick and independent switching due to the accumulation of elastic potential energy, which is transmitted at high speed to the contacts for arc extinction.

Functional and ergonomic handle

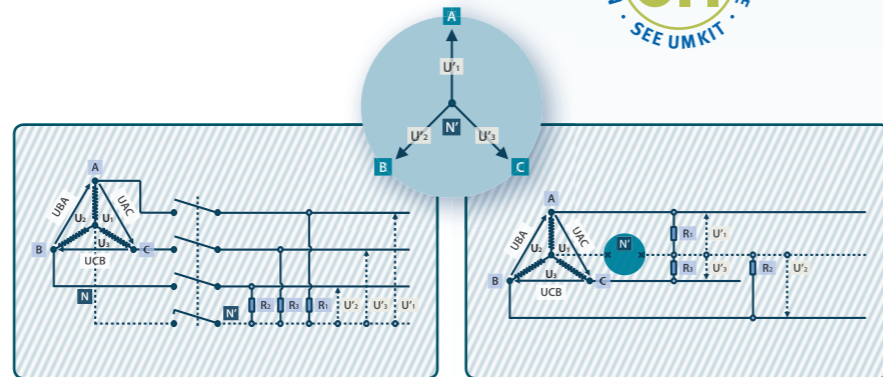
- > Good grip and excellent torque/resistance
- > Padlockable handle in **OFF** position (up to three locks Ø 5-8 mm)
- > Door interlock in **ON I** position
- > When lock in **OFF** position, door is interlocked
- > Defeatable feature in **ON I** position (with the use of a tool for maintenance operations). Handle interlock is restored when closing
- > Self-centering shaft for door handle



Neutral pole early make & late break

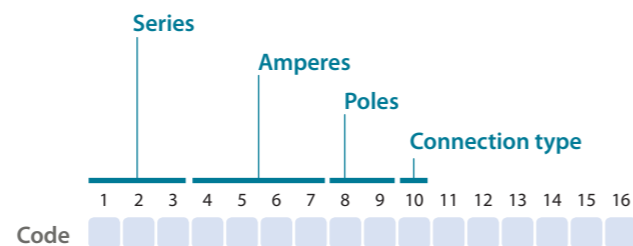
This safety feature prevents accidental overvoltage when making/breaking of loads connected between phase and neutral.

Due to the design in our 3P+N switch - disconnectors and changeover switches, the neutral contact closes before the main phases and opens later, thus ensuring this operation mode.



Range codification:

The **S5|S5M|S5N|S6|S6N** series, are identified by a code that describes their most important characteristics as described below.



series S5



1 2 3 4 5 6
S 5 -

Wide range of currents. Base mounting with screws. Switching under load up to 1000Vac (inductive and capacitive). Breaking current up to 8 times the operational current. Able to establish and withstand short-circuit currents up to 100kA. External or direct handles.

series S5M



1 2 3 4 5 6
S 5 M -

Back to back with operating mechanism in side, arrangement to increase the number of available contacts between 6 or 8. Base mounting with screws. External or direct handles.

series S5N



1 2 3 4 5 6
S 5 N -

Back to back with operating mechanism in front, arrangement to increase the number of available contacts between 6 or 8. Base mounting with screws. External or direct handles.

series S6



1 2 3 4 5 6
S 6 -

Switch - disconnectors with housings for 2P - 3P or 3P+N. Base mounting with screws. External or direct handles. Wide range of devices and accessories.

series S6N



1 2 3 4 5 6
S 6 N -

Back to back with operating mechanism in front, arrangement to increase the number of available contacts between 6 or 8. Base mounting with screws. External or direct handles.

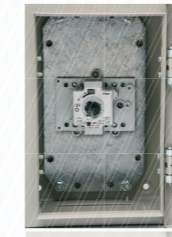
series CIS25D



1 2 3 4 5 6 7
C I S 2 5 D

S5 polyester enclosed switch. External padlockable handle with locking cover in ON I position. Removing cover blocked by padlock when handle is in OFF position.

series CIS25C



1 2 3 4 5 6 7
C I S 2 5 C

S5 metal enclosed switch. External padlockable handle with locking door in ON I position. Door opening blocked by padlock when handle is in OFF position.

series CIS25A



1 2 3 4 5 6 7
C I S 2 5 A

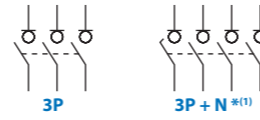
S5 polyester enclosed switch and fuse holders. External padlockable handle with locking cover in ON I position. Removing cover blocked by padlock when handle is in OFF position.

series CIS25F



1 2 3 4 5 6 7
C I S 2 5 F

S5 metal enclosed switch and fuse holders. External padlockable handle with locking door in ON I position. Door opening blocked by padlock when handle is in OFF position.



S5
SSN S5 switches 2, 3 & 4 poles (40 - 6300A) (O-I)

Manual handle

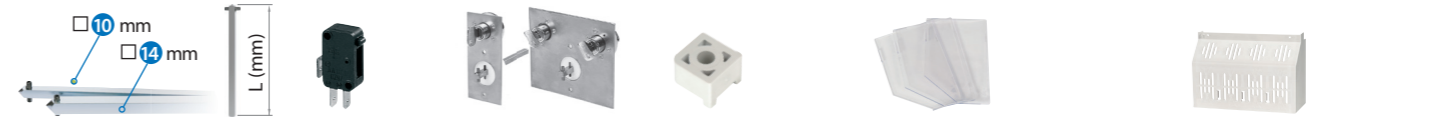
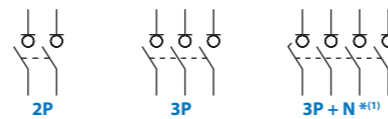
Shaft extensions ⁽⁴⁾ Bridging links ^(P2) Auxiliary contacts ⁽⁵⁾ DIN rail mounting Safety key lock device ⁽⁶⁾ Terminal protection ⁽⁷⁾ Terminal shrouds (1 unit) ⁽⁷⁾ Terminal shrouds (2 units) ⁽⁷⁾



Amp.	Size	Connection	Manual handle			Shaft extensions ⁽⁴⁾		Bridging links ^(P2)		Auxiliary contacts ⁽⁵⁾		DIN rail mounting		Safety key lock device ⁽⁶⁾		Terminal protection ⁽⁷⁾	Terminal shrouds (1 unit) ⁽⁷⁾			Terminal shrouds (2 units) ⁽⁷⁾														
			2 pole (2P)	3 pole (3P)	4 pole (3P + N) ⁽¹⁾	External ⁽²⁾	Direct	Emergency external ⁽²⁾	Size	Type 1 & 2		Code (4 units)		Code (2 units)	Simple	Double	Code	Up	Down	Up or Down	Code													
			Code	Code	Code	Code	Code	Code		L	Code ^(e1)	Code	Code									Code ^(e1)	Code ^(e1)	Code ^(e1)	Code	Code	Code	Code						
40	00	①	S5-00402PBO	S5-00403PBO	S5-00403NBO	DS-SA01	DS-SI01	DS-SR01	00	7	250	DS-EP04	-	D5LAU01	D5LAU02	-	DS-CAB1	DS-CEB1	-	-	-	-	-											
63			S5-00632PBO	S5-00633PBO	S5-00633NBO						387	DS-EP05								-	-	-	-	-	-	-	-	-	-	-	-	-		
80			S5-00802PBO	S5-00803PBO	S5-00803NBO						-	-								-	-	-	-	-	-	-	-	-	-	-	-	-	-	-
125	0	①	S5-01252PBO	S5-01253PBO	S5-01253NBO	DS-SA01	DS-SI01	DS-SR01	0	7	250	DS-EP04	-	D5LAU01	D5LAU02	-	DS-CAB1	DS-CEB1	DS-CU01	-	-	-	-											
125			S5-01252PSO	S5-01253PSO	S5-01253NSO						387	DS-EP05								-	-	-	-	-	-	-	-	-	-	-	-	-		
160			S5-01602PBO	S5-01603PBO	S5-01603NBO						-	-								-	-	-	-	-	-	-	-	-	-	-	-	-	-	-
160			S5-01602PSO	S5-01603PSO	S5-01603NSO						-	-								-	-	-	-	-	-	-	-	-	-	-	-	-	-	-
200			S5-02002PSO	S5-02003PSO	S5-02003NSO						-	-								-	-	-	-	-	-	-	-	-	-	-	-	-	-	-
250	1	①	S5-02502PDO	S5-02503PDO	S5-02503NDO	DS-SA11	DS-SI11	DS-SR11	1	10	375	DS-EP14	-	D5LAU01	D5LAU02	-	DS-CA11	DS-CE11	DS-CU12	-	-	-	-											
250			S5-02502PRO	S5-02503PRO	S5-02503NRO						536	DS-EP15								-	-	-	-	-	-	-	-	-	-	-	-	-		
315			S5-03152PRO	S5-03153PRO	S5-03153NRO						-	-								-	-	-	-	-	-	-	-	-	-	-	-	-	-	
400	2	①	S5-04002PCO	S5-04003PCO	S5-04003NCO	DS-LA21	DS-LI21	DS-LR21	2	14	345	DS-EP23	-	D5LAU01	D5LAU02	-	DS-CB21	DS-CF21	DS-CU22	-	-	-	-											
500			-	S5-05003PRO	S5-05003NRO						535	DS-EP24								-	-	-	-	-	-	-	-	-	-	-	-	-		
630			-	S5-06303PRO	S5-06303NRO						-	-								-	-	-	-	-	-	-	-	-	-	-	-	-	-	
800			-	S5-08003PCO	S5-08003NCO						-	-								-	-	-	-	-	-	-	-	-	-	-	-	-	-	
800			-	S5-08003PRO	S5-08003NRO						-	-								-	-	-	-	-	-	-	-	-	-	-	-	-	-	
1000	3	①	-	S5-10003PCO	S5-10003NCO	DS-LA31	DS-LI31	DS-LR31	3	14	535	DS-EP24	-	D5LAU01	D5LAU02	-	DS-CB31	DS-CF31	-	-	-	-	-											
1250			-	S5-12503PCO	S5-12503NCO						345	DS-EP23								-	-	-	-	-	-	-	-	-	-	-	-			
2000			-	S5-20003PCO	S5-20003NCO						535	DS-EP24								-	-	-	-	-	-	-	-	-	-	-	-	-		
1000	4	①	-	S5-10003PSO	S5-10003NSO	DS-LA41	DS-LI41	DS-LR41	4	14	485	DS-EP44	-	D5LAU01	D5LAU02	-	DS-CB41	DS-CF41	-	-	-	-	-											
1250			-	S5-12503PSO	S5-12503NSO						635	DS-EP45								-	-	-	-	-	-	-	-	-	-	-	-			
1600			-	S5-16003PSO	S5-16003NSO						-	-								-	-	-	-	-	-	-	-	-	-	-	-	-		
1800			-	S5-18003PSO	S5-18003NSO						-	-								-	-	-	-	-	-	-	-	-	-	-	-	-		
2000			-	S5-20003PDO	S5-20003NDO						-	-								-	-	-	-	-	-	-	-	-	-	-	-	-		
2000	5	①	-	S5N20003PSO	S5N20003NSO	DS-LA41	DS-LI41	DS-LR41	5	(SSN)	-	-	D5LPC41	D5LAU01	D5LAU02	-	DS-CB41	DS-CF41	-	-	-	-	-											
2500			-	S5N25003PSO	S5N25003NSO						-	-	-							-	-	-	-	-	-	-	-	-	-	-				
3150			-	S5N31503PSO	S5N31503NSO						-	-	-							-	-	-	-	-	-	-	-	-	-	-	-			
2000			-	S5N20003PP0	S5N20003NP0						-	-	-							-	-	-	-	-	-	-	-	-	-	-	-			
2500			-	S5N25003PP0	S5N25003NP0						-	-	-							-	-	-	-	-	-	-	-	-	-	-	-			
3150	6	①	-	S5N31503PP0	S5N31503NP0	DS-EN61 ⁽³⁾	-	-	6	-	-	-	-	-	-	-	-	-	-	-														
4000			-	S5-40003PP0	S5-40003NP0						-	-	-	-	-	-	-	-	-	-	-	-	-	-										
5000			-	S5-50003PP0	S5-50003NP0						-	-	-	-	-	-	-	-	-	-	-	-	-	-										
6300	-	S5-63003PP0	S5-63003NP0	-	-	-	-	-	-	-	-	-	-	-	-	-	-	-																

For high performance range (800Vac), please consult the corresponding full details.

^(P2) To comply with the operation and electrical features, the bridging links must be assembled to the switch. Please consult.



S6 S6 switches 2, 3 & 4 poles (200 - 800A) (O-I)

Manual handle

Shaft extensions ⁽⁴⁾ Auxiliary contacts ⁽⁵⁾ Safety key lock device ⁽⁶⁾ Spacers Phase barriers Terminal shrouds ⁽⁷⁾



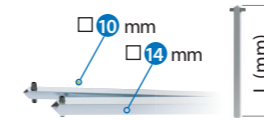
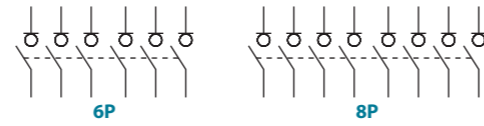
Amp.	Size	Connection	Manual handle			Shaft extensions ⁽⁴⁾		Auxiliary contacts ⁽⁵⁾		Safety key lock device ⁽⁶⁾		Spacers	Phase barriers			Terminal shrouds ⁽⁷⁾																				
			Bipolar (2P)	3 pole (3P)	4 pole (3P + N) ⁽¹⁾	External ⁽²⁾	Direct	Emergency external ⁽²⁾	Size	Type 1 & 2		Code (4 units)		Code (4 units)	(1 unit)	(2 units)	(3 units)	Code	Code	Code																
			Code	Code	Code	Code	Code	Code		L	Code ^(e1)	Code	Code								Code ^(e1)	Code ^(e1)	Code	Code	Code											
200	1	①	S6-02002PSO	S6-02003PSO	S6-02003NSO	DS-SA11	DS-SI11	DS-SR11	10	10	375	DS-EP14	D5LAU01	D5LAU02	DS-CA11	DS-CE11	DR-EL11	DR-SF11	DR-SF12	DR-SF13	DR-CU11	DR-CU12	DR-CU13													
250			S6-02502PSO	S6-02503PSO	S6-02503NSO						536	DS-EP15												-	-	-	-	-	-	-	-	-	-	-	-	
315			S6-03152PSO	S6-03153PSO	S6-03153NSO						-	-												-	-	-	-	-	-	-	-	-	-	-	-	-
400			S6-04002PDO	S6-04003PDO	S6-04003NDO						-	-												-	-	-	-	-	-	-	-	-	-	-	-	-
500	2	①	S6-05002PDO	S6-05003PDO	S6-05003NDO	DS-LA21	DS-LI21	DS-LR21	14	14	345	DS-EP23	D5LAU01	D5LAU02	DS-CB21	DS-CF21	DR-EL21	DR-SF21	DR-SF22	DR-SF23	DR-CU21	DR-CU22	DR-CU23													
630			S6-06302PSO	S6-06303PSO	S6-06303NSO						535	DS-EP24												-	-	-	-	-	-	-	-	-	-	-	-	
800			S6-08002PDO	S6-08003PDO	S6-08003NDO						-	-												-	-	-	-	-	-	-	-	-	-	-	-	-

For high performance range (800Vac), please consult the corresponding full details.

⁽¹⁾ Neutral pole early make-late break - Versions 4P with "simultaneous contacts" are also available, please consult.
⁽²⁾ Padlockable handle in OFF 0 position. Possibility of unlocking the door in ON I position (with the use of a tool). Door interlock by a padlock in OFF 0 position.
⁽³⁾ Slide bar handle, only standard door interlock, please consult the corresponding full details.

! Please indicate in your order the switch code and the handle code, as these both products are managed separately. A standard shaft is included with the handle.

⁽⁴⁾ A standard shaft is included with the external handle.
⁽⁵⁾ To be used as signalling or control contacts - Ie = 16A (resistive loads) 4A (inductive loads) at 250 Vac. Whilst closing, it switches after the main contacts. Whilst opening, it switches before the main contacts.
⁽⁶⁾ Handle interlock in OFF 0 position by means of a key, that only can be removed when the handle is unlocked. Interlocking in other positions available upon request.
⁽⁷⁾ One set or one unit for input or output. Terminal shrouds for **SSN** only for frontal switch. These accessories aren't compatible with each other.
^(e1) All these codes are related to the new handle , in case of replacements for old design handles, please consult.



S6N S6 switches 6 & 8 poles (125 - 630A) (O - I)

Manual handle

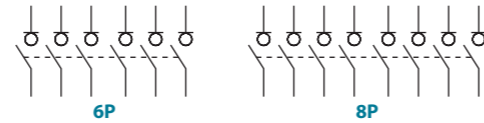
Shaft extensions ^{*(2)}

Auxiliary contacts ^{*(3)}

Safety key lock device ^{*(4)}



Amp.	Size	Connection	6 pole (6P)		8 pole (8P)		External ^{*(1)}	Direct	Emergency external ^{*(1)}	Size	□	Type 1 & 2		1NO+1NC	2NO+2NC	Simple	Double
			Code	Code	Code	Code						Code	Code	L	Code ^{*(e1)}	Code	Code
125	1		S6N01256PS0	S6N01258PS0	DS-SA11	DS-SI11	DS-SR11	1	10	375	536	DS-EP14 DS-EP15	D5LAU01	D5LAU02	DS-CA11	DS-CE11	
160			S6N01606PS0	S6N01608PS0													
200			S6N02006PS0	S6N02008PS0													
250			S6N02506PS0	S6N02508PS0													
315			S6N03156PS0	S6N03158PS0													
400			S6N04006PS0	S6N04008PS0													
500	S6N05006PS0	S6N05008PS0															
630	2		S6N06306PS0	S6N06308PS0	DS-LA21	DS-LI21	DS-LR21	2	14	345	535	DS-EP23 DS-EP24	D5LAU01	D5LAU02	DS-CB21	DS-CF21	
800			S6N08006PS0	S6N08008PS0													



S5M S5N S5 switches 6 & 8 poles (125 - 2000A) (O - I)

Manual handle

Auxiliary contacts ^{*(3)}

Safety key lock device ^{*(4)}

Phase barriers ^{*(5)}

Terminal protection ^{*(5)}

Terminal shrouds ^{*(5)} (1 unit)

Terminal shrouds ^{*(5)} (2 units)



Amp.	Size	Connection	6 pole (6P)		8 pole (8P)		External ^{*(1)}	Direct	Emergency external ^{*(1)}	Size	Auxiliary contacts ^{*(3)}		Safety key lock device ^{*(4)}		Phase barriers ^{*(5)}		Terminal protection ^{*(5)}	Terminal shrouds ^{*(5)} (1 unit)			Terminal shrouds ^{*(5)} (2 units)				
			Code	Code	Code	Code					Code	Code	Code	Code	Code	Code		Code	Code	Code		Code	Code	Code	Code
125	0		S5M01256PS0	S5M01258PS0	DS-LA01	DS-SI01	DS-LR01	0	DS-AU11	DS-AU12	DS-CAB1	DS-CEB1	DS-PB01	DS-PB02	-	DS-CU02	DS-CU03	DS-CU04	-	-	-	-			
160			S5M01606PS0	S5M01608PS0																			DS-CU02	DS-CU03	DS-CU04
200			S5M02006PS0	S5M02008PS0																			DS-CU05	DS-CU06	DS-CU07
250	1		S5M02506PRO	S5M02508PRO	DS-LA12	DS-LI12	DS-LR12	1	DS-AU11	DS-AU12	DS-CB12	DS-CF11	DS-PB12	DS-PB11	DS-CU12	-	-	-	-	-	-	DS-CU11			
315			S5M03156PRO	S5M03158PRO																			DS-PB12	DS-PB11	
400			S5M04006PC0	S5M04008PC0																			DS-PB14	DS-PB13	
500	2		S5M05006PRO	S5M05008PRO	DS-LA22	DS-LI22	DS-LR22	2	DS-AU11	DS-AU12	DS-CB21	DS-CF21	DS-PB22	DS-PB21	-	-	-	-	-	-	-	DS-CU21			
630			S5M06306PRO	S5M06308PRO																			DS-CU12	DS-CU11	
800			S5M08006PRO	S5M08008PRO																			DS-CU12	DS-CU11	
1000	3		S5M10006PC0	S5M10008PC0	DS-LA41	DS-LI41	DS-LR41	3	DS-AU11	DS-AU12	DS-CB41	DS-CF41	DS-PB32	DS-PB31	-	-	-	-	-	-	-	DS-CU31			
1250			S5N12506PS0	S5N12508PS0																			DS-CU12	DS-CU11	
1600			S5N16006PS0	S5N16008PS0																			DS-CU12	DS-CU11	
1800	4 (S5N)		S5N18006PS0	S5N18008PS0	DS-LA41	DS-LI41	DS-LR41	4 (S5N)	D5LAU01	D5LAU02	DS-CB41	DS-CF41	-	-	-	-	-	-	-	-	-				
2000			S5N20006PS0	S5N20008PS0																		DS-CU12	DS-CU11		

For high performance range (800Vac), please consult the corresponding full details.

^{*(1)} Padlockable handle in OFF 0 position. Possibility of unlocking the door in ON I position (with the use of a tool). Door interlock by a padlock in OFF 0 position.

Please indicate in your order the switch code and the handle code, as these both products are managed separately. A standard shaft is included with the handle.

^{*(2)} A standard shaft is included with the external handle.

^{*(3)} To be used as signalling or control contacts – Ie = 16A (resistive loads) 4A (inductive loads) at 250 Vac. Whilst closing, it switches after the main contacts. Whilst opening, it switches before the main contacts.

^{*(4)} Handle interlock in OFF 0 position by means of a key, that only can be removed when the handle is unlocked. Interlocking in other positions available upon request.

^{*(5)} One set or one unit for input or output. Terminals shrouds for S5M or S5N only for frontal switch. These accessories aren't compatible with each other.

^{*(e1)} All these codes are related to the new handle , in case of replacements for old design handles, please consult.