

AC Modular switch - disconnectors and changeover switches

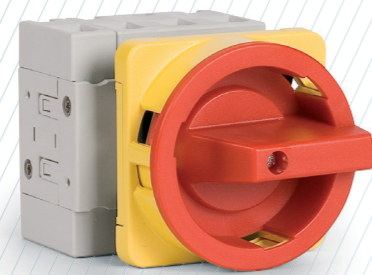
Modular switch – disconnectors and changeover switches of reduced size, available in different fixation types with a wide range of currents and a variety of accessories.

series
ZBK

According to:
VDE 0660, IEC 60947-3, IEC 60947-5-1
UL & cUL
RoHS



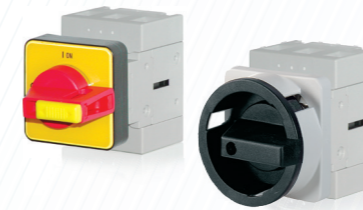
Testing and approvals:
CE UL EAC



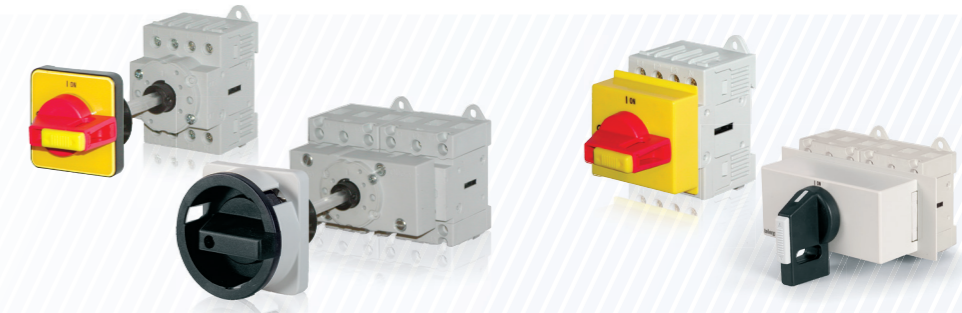
The ZBK switch - disconnectors are 3, 4, 6 and 8-pole modular devices with a high breaking capacity and contact pressure, which respond well to short circuits. They are designed for use in low voltage civil and industrial machines and facilities and made of different models depending on the type of mounting. Manufactured under strict quality controls to provide a reliable product that meets the most demanding requirements.

The ZBK series also includes a range of 1-0-2 changeover switches plus applications with plastic enclosures and various accessories.

series
ZBK O-I



Door mounting fixing by screws.
Two sizes of padlockable handles .
Auxiliary terminals and other accessories.



Base mounting fixing by screws or DIN rail and handle $\varnothing 22$
Two sizes of padlockable handles .
Shaft extension depth-adjustable.
Auxiliary terminals and other accessories.

Base mounting fixing by screws or DIN rail.
Direct handle (modular) with lock .
Auxiliary terminals and other accessories.

series
ZBK I-O-2



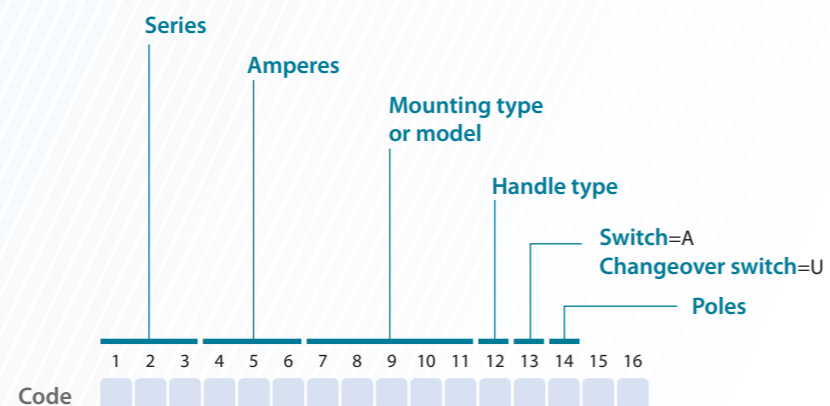
Modular switch in plastic enclosure (sealable).
IP66
Padlockable handles .



Base mounting fixing by screws or DIN rail.
Direct handle (modular) with lock .
Supplied with bridging links included.
Auxiliary terminals and other accessories.

Range codification:

The ZBK series, are identified by a code that describes their most important characteristics as described below.



Accessories

