



14 15 16
D100 4



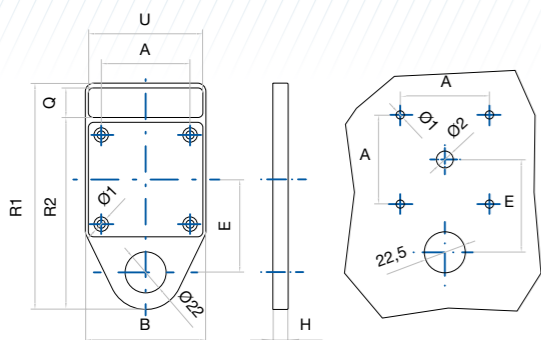
Light with white neon lamp
D100

14 15 16
D101 5



Light with white neon lamp
and inscription plate
D101

D101 Inscription plate included with text as requested.



Supply	Size	For series	Code D100	Code D101
Spare or incorporated in the cam switch	0-1	T12-T20-TB20-TB25-TB32 TF12-TF16-TF25 T16-T25-T32-T40	DT-10011	DT-10111
	2	T50-T63-T100-T175	DT-10021	DT-10121
	3	T200	DT-10031	DT-10131

Series	B	R1	R2	H	E	U	Q	A	Ø1	Ø2
T12 T20 T16 T25 T32 T40 TB20 TB32 TF12 TF25	65	123	102	6,5	50	61	16	48	4,5	9
T50 T63 T100 T175	94	160	137	7,5	70	90	19	68	5,5	12
T200 T800	132	198	173	10	85	126	21	108	6,5	16

13 14 15 16
D200 D



Tandem drive operation*
D200 with two columns
D201 with three columns

13 14 15 16
D300 F



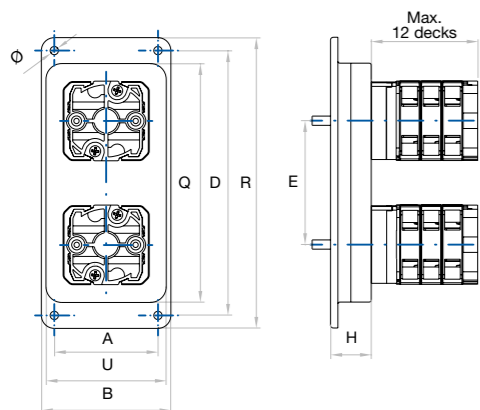
Blocking operation*
D300 with two columns
D301 with three columns

D200-201 Operation with one handle only and up to 48 contacts in two columns, or 72 contacts in three columns according to the electrical diagram.

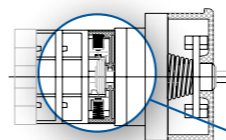
D300-301 For switching up to 29 positions with two handles and two columns, or 36 positions with three handles and three columns according to the electrical diagram.

Supply	Size	For series
Only incorporated in the cam switch	0-1	T12-T20-TF12-TF16-TF25 T16-T25-T32-T40
	2	T50-T63-T100
	3	T175-T200

* T Series (without IP20 protections).



Series	Tandem		Blocking		A	B	D	R	U	Q	E	H	Ø	
	D200	D300	D201	D301										
T12 T20 T16 T25 T32 T40 TF12 TF16 TF25	D200	D300	D201	D301	56	70	143	157	64	128	67	22	22	4,5
T50 T63 T100	D200	D300	D201	D301	90	110	210	230	95	191	288	15	21	6,5
T175 T200	D200	D300	D201	D301	152	173	290	310	132	270	139	19	25	



Push to turn
D401*

Before operating the handle must be pressed to unlock, simultaneously an auxiliary contact it is open or closed (e.g. for switching without load).

Supply	Size	For series
Only incorporated in the cam switch	0	T12-T20-TB20-TB25-TB32
	1	T16-T25-T32-T40

* for arrow handle with indicator, other combinations with special scheme

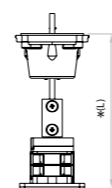


Locking voltage device
D420

The screw position, left or right, prevents the rotation of the handle.

This device always includes a mounting plate size 1.

Supply	Size	For series
Only incorporated in the cam switch	0-1	T12-T20-TB20-TB25-TB32 TF12-TF16-TF25 T16-T25-T32-T40



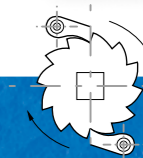
Shaft extension

To extend the shaft length to the depth required. To be complemented with the corresponding D501 device.

Supply	Size	Length (mm)	For series	Code
Spare or incorporated in the cam switch	0-1	200	T12-T20-TB20-TB25-TB32 TF12-TF16-TF25 T16-T25-T32-T40	DT-EPR11
	5 5	500	T16-T25-T32-T40	DT-EPR12
Spare or incorporated in the cam switch	2	200	T50-T63	DT-EPR21
	7 7	500	T100-T175	DT-EPR22
Only incorporated in the cam switch	3	upon request	T200	-

* (L) Specify total length when ordering

13 14 15 16
I



One way rotation
D405

This device allows to rotate the handle in only one way.

Supply	Size	For series
Only incorporated in the cam switch	0-1	T12-T20-TB20-TB25-TB32 TF12-TF16-TF25 T16-T25-T32-T40



Clutch device with door interlock
D501

With door interlock in ON position (switch 0-1 to 90°) or according to the electrical diagram.

- 1 Size 0 with padlockable handle included.
- 2 Size 0 - 1 - 2 - 3.

Supply	Size	For series	Code
Spare	D501 + 704 90°	0	T12-T20 TB20-TB25-TB32 TF12-TF16-TF25
			DT-75401N07 DT-75401R01 F 6 N 1 F 6 R D
Incorporated in the cam switch	90°	0	T12-T20 TB20-TB25-TB32 TF12-TF16-TF25
		1	T16-T25-T32-T40
		2	T50-T63-T100-T175
Spare	60°	0-1	T12-T20-TB20-TB25-TB32 TF12-TF16-TF25 T16-T25-T32-T40
		2	T50-T63-T100-T175
		3	T200
Spare	45°	0-1	T12-T20-TB20-TB25-TB32 TF12-TF16-TF25 T16-T25-T32-T40
		2	T50-T63-T100-T175
		3	T200
Incorporated in the cam switch			12 13 14 15 16 F

Coaxial coupling
D600



Simultaneous operation with only one handle of two or more cam switches (T series) with different ratings coupled together.

Key handle device
D701



D701 Supplied as standard with ø22mm fixing; ø30 mm also available under request.

The key can be locked and removed on request at 60°, 90° or 180°.

Assembly limitation:
4 contacts actuating simultaneously.

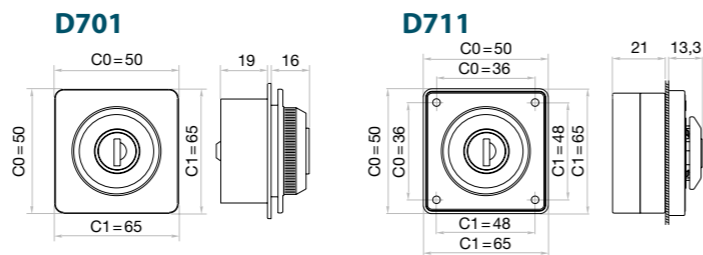
D711 Supplied as standard with screw mounting and different types of keys that can be locked and removed at 90°.

Assembly limitation:
4 contacts actuating simultaneously.

Key handle device
D711



Supply	Size	For series
Only incorporated in the cam switch	0-1	T12-T20-TB20-TB25-TB32 TF12-TF16-TF25 T16-T25-T32-T40



Key lock device
D702



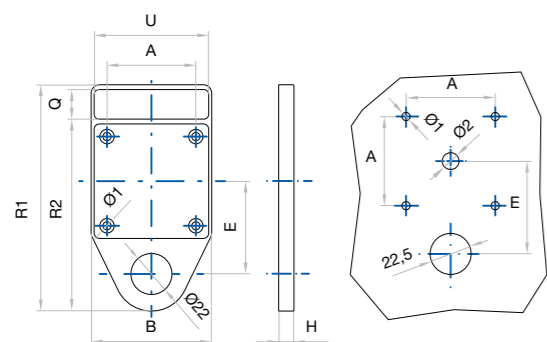
D702 The key lock device allows the adaptation of 1 or 2 auxiliary contacts (1NO + 1NC) operated by turning the key (like signalling or control contacts).

D703 Inscription plate included with text as requested.

Key lock device
with inscription plate
D703



Supply	Size	For series
Only incorporated in the cam switch	0-1	T12-T20-TB20-TB25-TB32 TF12-TF16-TF25 T16-T25-T32-T40
	2	T50-T63 T100-T175
	3	T200



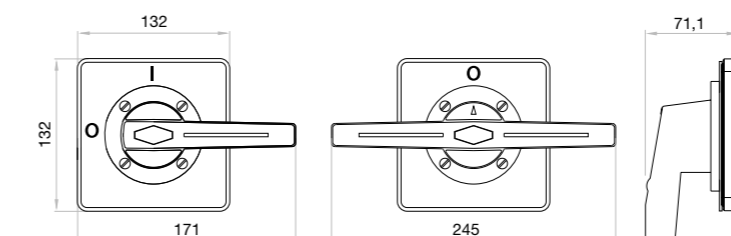
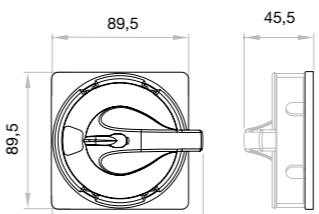
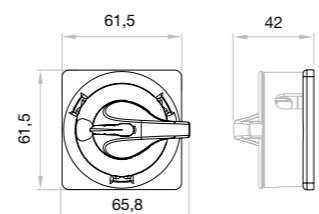
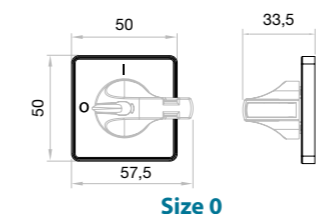
* Auxiliary contacts 1NO + 1NC

Series	B	R1	R2	H	E	U	Q	A	Ø1	Ø2
T12 T20 T16 T25 T32 T40 TB20 TB32 TF12 TF25	65	123	102	6,5	50	61	16	48	4,5	9
T50 T63 T100 T175	94	160	137	7,5	70	90	19	68	5,5	12
T200 T800	132	198	173	10	85	126	21	108	6,5	16

Padlockable handle
D704



- Allows the blockade of the handle in OFF position using padlock.
- Available in red colour on yellow background ¹⁵R or black colour on grey background ¹⁵N
- According to the machinery directive and the european standards, red & yellow handles ¹⁵R are intended to be used only in ON - OFF safety switches.
- For switches O-I specify version ¹⁵R or ¹⁵N, for the rest will be supplied ¹⁵N version (padlocks not included).



	Supply	Size	For series	Code
Square plate	Spare	0	T12-T20 TB20-TB25-TB32 TF12-TF16-TF25 TP10	DT-70401N07
	Incorporated in the cam switch			DT-70401R01*
Closed view	Spare	0-1	T12-T20 TB20-TB25-TB32 TF12-TF16-TF25 T16-T25-T32-T40	13 14 15 16 6 N 1
	Incorporated in the cam switch			13 14 15 16 6 R D
Open view	Spare	0-1	T12-T20 TB20-TB25-TB32 TF12-TF16-TF25 T16-T25-T32-T40	13 14 15 16 7 N 0
	Incorporated in the cam switch			13 14 15 16 7 R 0
Closed view	Spare	2	T50-T63 T100-T175	13 14 15 16 7 N 0
	Incorporated in the cam switch			13 14 15 16 7 R 0
Open view	Spare	2	T50-T63 T100-T175	13 14 15 16 C N 0
	Incorporated in the cam switch			13 14 15 16 C R 0
Square plate (single handle)	Spare	3	T200	DT-70431
	Incorporated in the cam switch			DT-70433*
Square plate (double handle)	Spare	3	T200	13 14 15 16 N N 1
	Incorporated in the cam switch			13 14 15 16 N R D
				DT-70432
				DT-70434*
				13 14 15 16 O N 1
				13 14 15 16 O R D

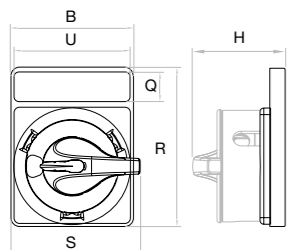
*Yellow plate with 0 - 1 positions included

Padlockable handle with inscription plate D705



- Handle can be blocked in OFF position using padlocks.
- Available in red colour on yellow background ¹⁵R or black colour on grey background ¹⁵N
- Inscription plate included with text as requested.
- According to the machinery directive and the european standards, red & yellow handles ¹⁵R are intended to be used only in ON-OFF safety switches.
- For switches O-I specify version ¹⁵R or ¹⁵N, for the rest will be supplied ¹⁵N version (padlocks not included).

	Supply	Size	For series	Code
● Closed view	Only incorporated in the cam switch	0-1	T12-T20	13 14 15 16 7 N 2
			TB20-TB25-TB32 TF12-TF16-TF25	13 14 15 16 7 R 2
○ Open view	Only incorporated in the cam switch	0-1	T16-T25 T32-T40	13 14 15 16 C N 2
				13 14 15 16 C R 2
● Closed view	Only incorporated in the cam switch	2	T50-T63 T100-T175	13 14 15 16 7 N 2
				13 14 15 16 7 R 2
○ Open view	Only incorporated in the cam switch	2		13 14 15 16 C N 2
				13 14 15 16 C R 2
□ Square plate (single handle)	Only incorporated in the cam switch	3	T200	13 14 15 16 N N 2
□ Square plate (double handle)	Only incorporated in the cam switch	3	T200	13 14 15 16 O N 2



Size	B	H	Q	R	S	U
0-1	6,5	48,5	16	85	65,8	61
2	9,4	53,5	19	117	98,8	90
3	13,2	71,5	21	157	171	126

14 15 16
D708 **8**



Push button blocking system D708

D708 Available in two versions (specify when ordering):

- The handle is blocked in all positions.
- The handle is blocked only in OFF position.

The switch in version 2 can be used for emergency operation since the handle is not blocked in ON position.

Both versions admit the adaptation of 1 and 2 changeover auxiliary contacts (1NO+1NC), which are activated when the button is pressed and it can be used as signalling and combined operation with contactors.

D709 Inscription plate included with text as requested.

14 15 16
D709 **9**



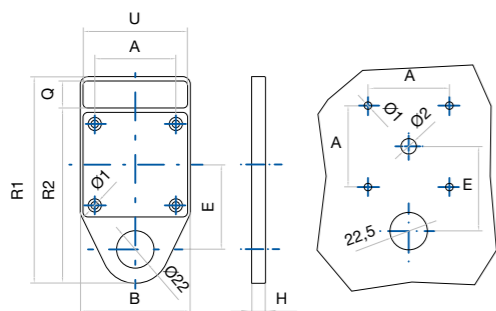
Push button blocking system with inscription plate D709

Supply	Size	For series
Only incorporated in the cam switch	0-1	T12-T20-TB20-TB25 TB32-TF12-TF16-TF25 T16-T25-T32-T40
	2	T50-T63-T100-T175
	3	T200

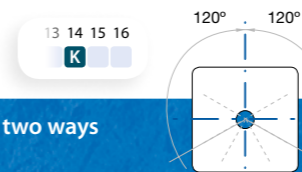
* Auxiliary contacts 1NO + 1NC 2NO + 2NC



Series	B	R1	R2	H	E	U	Q	A	Ø1	Ø2
T12 T20 T16 T25 T32 T40 TB20 TB32 TF12 TF25	65	123	102	6,5	50	61	16	48	4,5	9
T50 T63 T100 T175	94	160	137	7,5	70	90	19	68	5,5	12
T200 T800	132	198	173	10	85	126	21	108	6,5	16



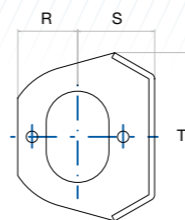
Return from one or two ways up to 120° D802



Supply	Size	For series
Only incorporated in the cam switch	0-1	T12-T20-TB20-TB25-TB32 TF12-TF16-TF25 T16-T25-T32-T40

Terminal shrouds D900

Sizes 0-1 and 2 are supplied as standard with removable protected terminals (IP20).

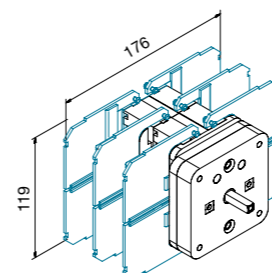


Series	R	S	S
T12 T20	21	27	59
T16 T25 T32 T40	28	34	72
T50 T63 T100	15	52	104
T200	40	155	130

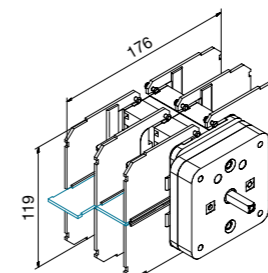
Supply	Size	For series	Code
	0	T12-T20	DT-90002
	1	T16-T25-T32-T40	DT-90012
Spare	2	T50-T63	DT-90022
		T100	DT-90024
	3*	T200	DT-90031
		T400	DT-90032

* Max. 2 chambers

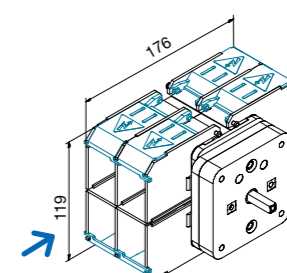
T175 terminal shrouds and phase barriers D900



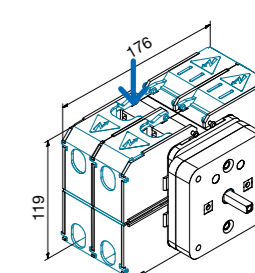
Phase barriers - Vertical
Code DT-90025 (4 units)



Phase barriers - Horizontal
Code DT-90026 (2 units)



Terminal shrouds (L)
Code DT-90027 (4 units)



Terminal shrouds (S)
Code DT-90028 (4 units)

DIN rail mounting device D904

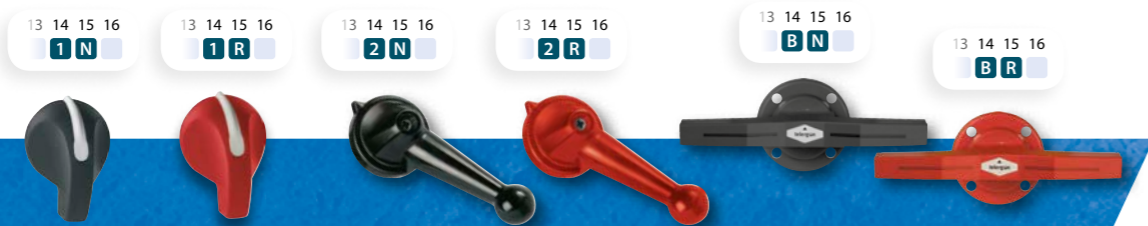
D904 Included as standard in D-F-G fixing types for TB-TF and T175 series.

D905 DIN rail mounting with frontal plate and handle for distribution boards.

Front plates for distribution boards D905

Supply	Size	For series	Code
Spare or incorporated in the cam switch	0-1	T12-T20-T16 T25-T32-T40	DT-90401
	2	T50-T63-T100-T175	DT-90421
Only incorporated in the cam switch	0	T12-T20 TF12-TF16-TF25	12 13 14 15 16 H 3 N 0

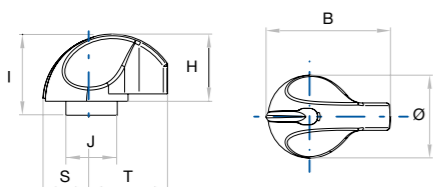
Handles (plastic)



- 14 **1** Arrow handle with indicator.
- 14 **2** Ball lever handle for size 1 and 3.
- 14 **B** Double handle for cam switches size 3.

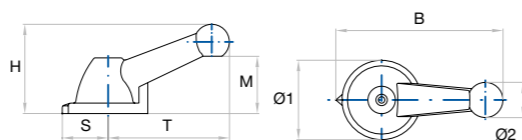
	Supply	Size	Code		
Arrow handle with indicator	Spare or incorporated in the cam switch	0	● 40110030 ● 40110031		
		1	● 40111034 ● 40111035		
		2	● 40112028 ● 40112029		
		3	● 40113023 ● 40113024		
		Ball lever	Spare or incorporated in the cam switch	1	● 40111002 ● 40111003
				3	● 40113002 ● 40113001
Double handle	Spare or incorporated in the cam switch			3	● 40113008 ● 40113007

Arrow handle with indicator (sizes 0 - 1 - 2 - 3)



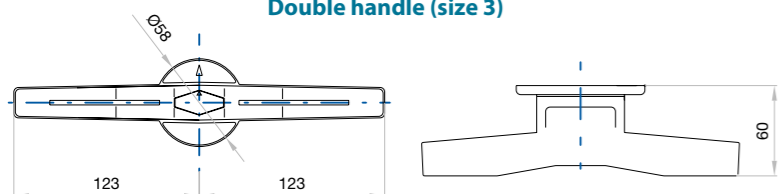
Size	B	H	I	J	S	T	Ø
0	39,3	26,8	30,5	14,5	13,5	24	27
1	50	28	33	14,5	18	32	36
2	66,5	36,5	-	-	22,5	44	45
3	100	54	-	-	38	62	76

Ball lever (sizes 1 - 3)

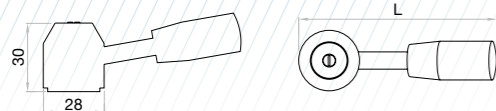


Size	B	H	S	T	M	Ø1	Ø2
1	89	48	24	65	32,5	37	18
3	151,5	81	41,5	110	52	72	32

Double handle (size 3)



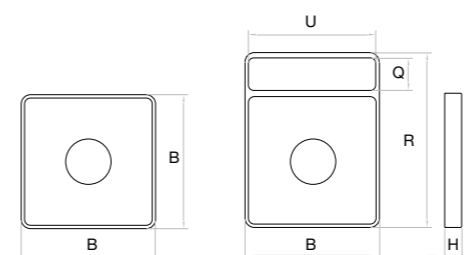
Handles (metal & plastic)



	Supply	Size	Code
Metal lever & plastic	Spare or incorporated in the cam switch	L=90mm	9-KN100146
		L=108mm	9-KN100145

Neutral name plates and neutral inscription plates

- Plastic indicating plate on square base with black engraving
- Also in yellow colour available (emergency handle).
- Different engravings are available under request.
- PPA model with inscription plate.



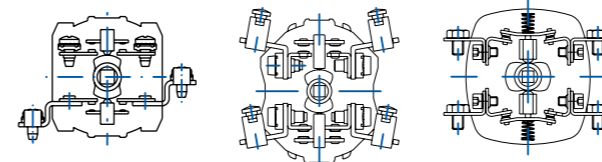
PPA

PRA

Size	B	R	H	U	Q
0	50	65	6,5	47	11
1	65	85	6,5	61	16
2	94	117	7	90	19
3	132	157	10	126	21

Terminal extensions CP

Supply	Size	For series
Only incorporated in the cam switch	0	T12-T20
	1	T16-T25-T32-T40
	2	T50-T63-T100



T12-T16-T20-T25

T32-T40-T63-T100

T200 standard connection as per drawing

Fast-on terminals 6,25 x 0,8

Supply	Size	For series
Only incorporated in the cam switch	0-1	T12-T20 T16-T25-T32-T40



	Supply	Size	Code
PPA (neutral plate)	Spare or incorporated in the cam switch	0	■ 40140045 ■ 40140061 ■ 40110028
		1	40141039 40141053 40111032
		2	40142020 40142028 40142025
		3	40143020 40143028 40143084
PRA (neutral plate)	Spare or incorporated in the cam switch	0	■ 40140203 ■ 40110029
		1	40141188 40111033
		2	40142095 40112026
		3	40143088 40143086