

# S6 DC ISOLATION ONLY DC Disconnectors

## 1P - 2P

**Size 1**

**A** 160|200|250|400

1500Vdc

**1P**

CODE-1P

160A	S6-01601VS0P38
200A	S6-02001VS0P38
250A	S6-02501VS0P38
400A	S6-04001VD0P38

**2P**

CODE-2P

160A	S6-01602LS0P38
200A	S6-02002LS0P38
250A	S6-02502LS0P38
400A	S6-04002LD0P38

### Accessories

- Direct handle**  
CODE DS-SI11T
- External handle** included shaft<sup>\*(e1)</sup>  
IP65  
CODE DS-SA11T
- External handle** without shaft  
IP65  
CODE DS-SA14T
- Terminal shrouds**  
CODE DR-CU11 (1 unit)
- Phase barriers**  
CODE DR-SF11 (1 unit)  
CODE DR-SF12 (2 units)
- Spacers**  
CODE DR-EL11 (4 units)
- Auxiliary contacts**  
1NO+1NC CODE D5LAU01  
2NO+2NC CODE D5LAU02  
Ie = 16 A (resistive loads)  
4 A (inductive loads) at 250 Vac.

### Shafts

**Standard shaft** included <sup>\*(e1)</sup>

L (mm)	P (mm)	CODE
227	103... 256	

**Shaft extensions**

**Type 1**

L (mm)	P (mm)	CODE
375	103... 415	DS-EP14

**Type 2**

L (mm)	P (mm)	CODE
536	103... 576	DS-EP15

### Technical information



**DO NOT OPERATE UNDER LOAD**

According to IEC 60947-1  
IEC 60947-3

	160	200	250	400
Rated insulation voltage DC U <sub>i</sub>	V 1500	1500	1500	1500
Rated impulse withstand voltage U <sub>imp</sub>	kV 12	12	12	12
Rated operational current DC20A I <sub>e</sub>	A 160	200	250	400

	160	200	250	400
Number of mechanical operations (according to the standards, for other values please consult)	Cycles 8000	8000	8000	5000
Maximum weight 1P	Kg 1,22	1,22	1,22	1,22
Maximum weight 2P	Kg 1,35	1,35	1,35	1,35

### Dimensions (mm)

Door drilling for external handle

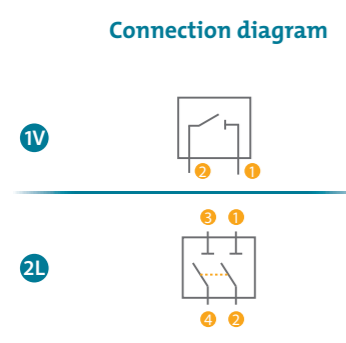
**1P**

**2P**

S max (Cu) mm <sup>2</sup>	H max (Cu) mm	L max (Cu) mm	T	M
160 A	185	8	25	M12 24
200 A	185	8	25	M12 24
250 A	185	8	25	M12 24
400 A	240 <sup>*(e1)</sup>	8	30	M12 24

<sup>\*(e1)</sup> Using phase barriers DR-SF... to maintain the required clearance.

### Connection diagram



# S6 DC ISOLATION ONLY DC Disconnectors

## 1P - 2P

**Size 2**

**A** 630|800



1500Vdc



**1V** 630A  
CODE-1P S6-06301VS0P38



**2L** 630A  
800A  
CODE-2P S6-06302LS0P38  
S6-08002LD0P38



### Technical information



**DO NOT OPERATE UNDER LOAD**

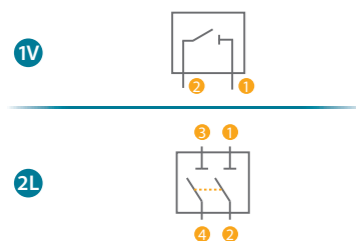
According to IEC 60947-1  
IEC 60947-3

		630	800
Rated insulation voltage DC $U_i$	V	1500	1500
Rated impulse withstand voltage	$U_{imp}$ kV	12	12
Rated operational current DC20A	$I_e$ 1500 Vdc A	630	800

		630	800
Number of mechanical operations (according to the standards, for other values please consult)	Cycles	5000	3000
Maximum weight 1P	Kg	3,40	3,40
Maximum weight 2P	Kg	3,80	3,80

### Connection diagram

Connection diagram



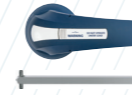
### Accessories



**Direct handle**  
CODE DS-LI21T



**Terminal shrouds**  
CODE DR-CU21 (1 unit)



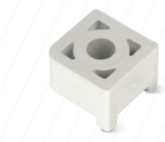
**External handle** included shaft <sup>\*(e1)</sup>  
IP65  
CODE DS-LA21T



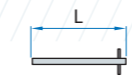
**Phase barriers**  
CODE DR-SF21 (1 unit)  
CODE DR-SF22 (2 units)



**External handle** without shaft  
IP65  
CODE DS-LA24T



**Spacers**  
CODE DR-EL21 (4 units)



**Shafts**  
**Standard shaft** included <sup>\*(e1)</sup>  
L (mm) P (mm)  
195 134.. 240



**Auxiliary contacts**  
1NO+1NC CODE D5LAU01  
2NO+2NC CODE D5LAU02  
  
I<sub>e</sub> = 16 A (resistive loads)  
4 A (inductive loads) at 250 Vac.

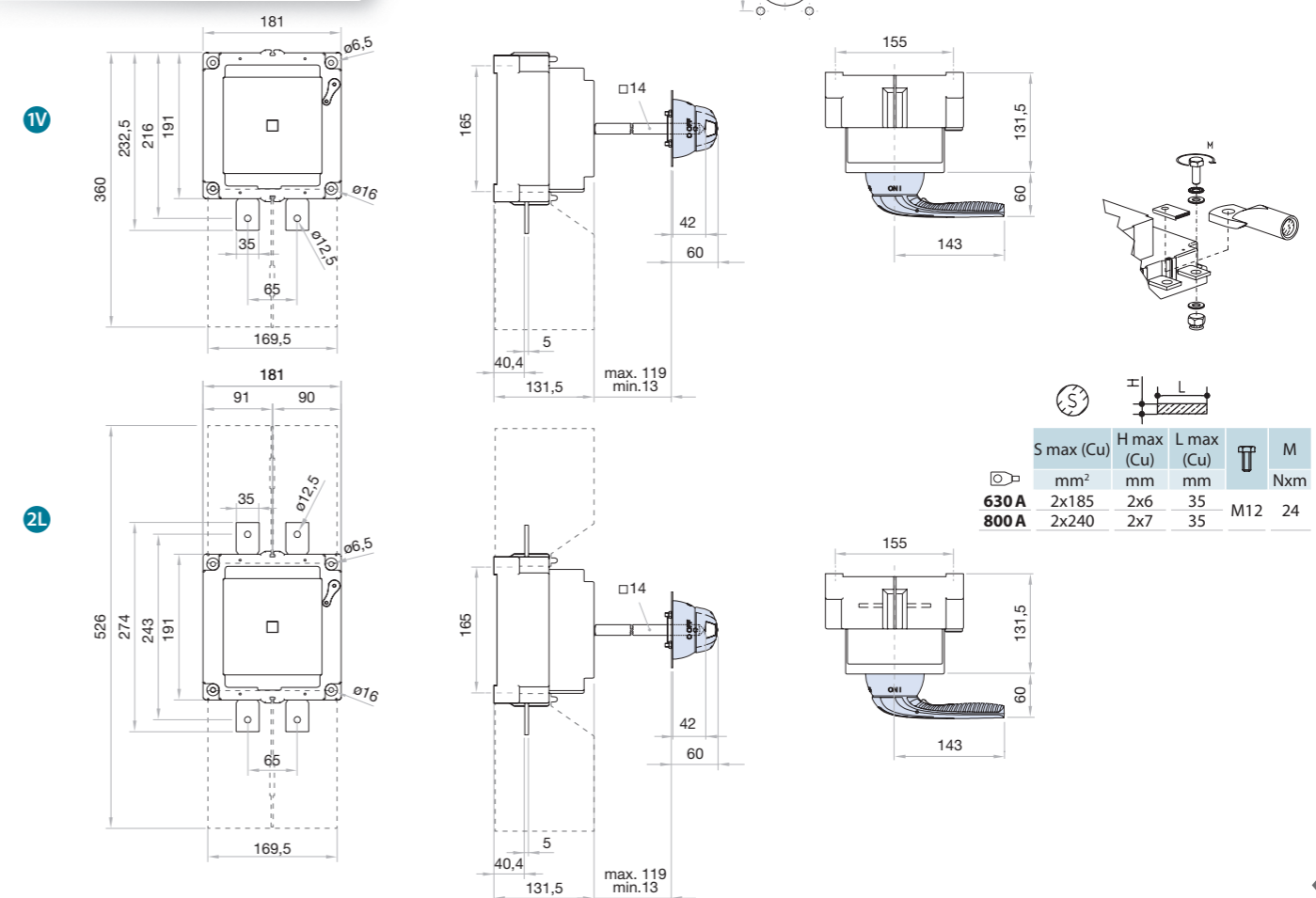


**Shaft extensions**  
**Type 1**  
L (mm) P (mm) CODE  
345 134.. 400 DS-EP23



**Type 2**  
L (mm) P (mm) CODE  
535 134.. 560 DS-EP24

### Dimensions (mm)



	S max (Cu)	H max (Cu)	L max (Cu)	T	M
	mm <sup>2</sup>	mm	mm	mm	Nxm
<b>630 A</b>	2x185	2x6	35	M12	24
<b>800 A</b>	2x240	2x7	35	M12	24