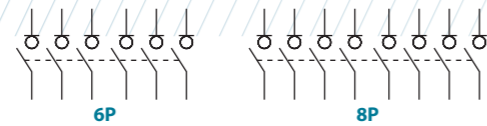


# S5M AC Switch - disconnecter base mounting 6P - 8P

Size 0  
A 125|160|200



6P	CODE-125A	CODE-160A	CODE-200A
	S5M01256PS0	S5M01606PS0	S5M02006PS0
8P	S5M01258PS0	S5M01608PS0	S5M02008PS0



## Accessories

- Direct handle**  
 CODE DS-SI01
- External handle** included shaft <sup>\*(61)</sup>  
 IP65  
 CODE DS-LA01
- Emergency external handle** included shaft <sup>\*(61)</sup>  
 IP65  
 CODE DS-LR01
- Shafts**  
**Standard shaft** included <sup>\*(61)</sup>  
 L (mm) | P (mm)  
 177 | 155... 263
- Auxiliary contacts**  
 1NO+1NC CODE DS-AU11  
 2NO+2NC CODE DS-AU12  
 Ie = 16 A (resistive loads)  
 4 A (inductive loads) at 250 Vac.



## Terminal shrouds <sup>\*(7)</sup>

UP 6P (1 unit)	DOWN 6P (1 unit)	UP OR DOWN 8P (1 unit)
DS-CU02	DS-CU03	DS-CU04
DS-CU05	DS-CU06	DS-CU07

(For frontal switch only)

## Phase barrier <sup>\*(7)</sup>

6P	8P
DS-PB01	DS-PB02
DS-PB04	DS-PB03

(1 kit for input or output)

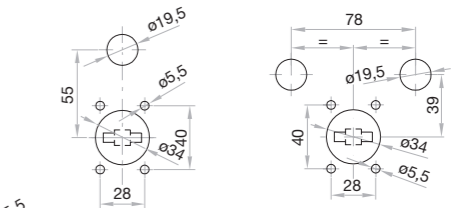
<sup>\*(7)</sup> These accessories aren't compatible with each other.

## Safety key lock devices

Simple CODE DS-CAB1  
 Double CODE DS-CEB1

For external handle, lock the handle by means of a key in position "OFF" (under request, in "ON"), the key can only be removed with the handle locked

Door drilling for handle and key lock device  
 Simple Double



## Technical information



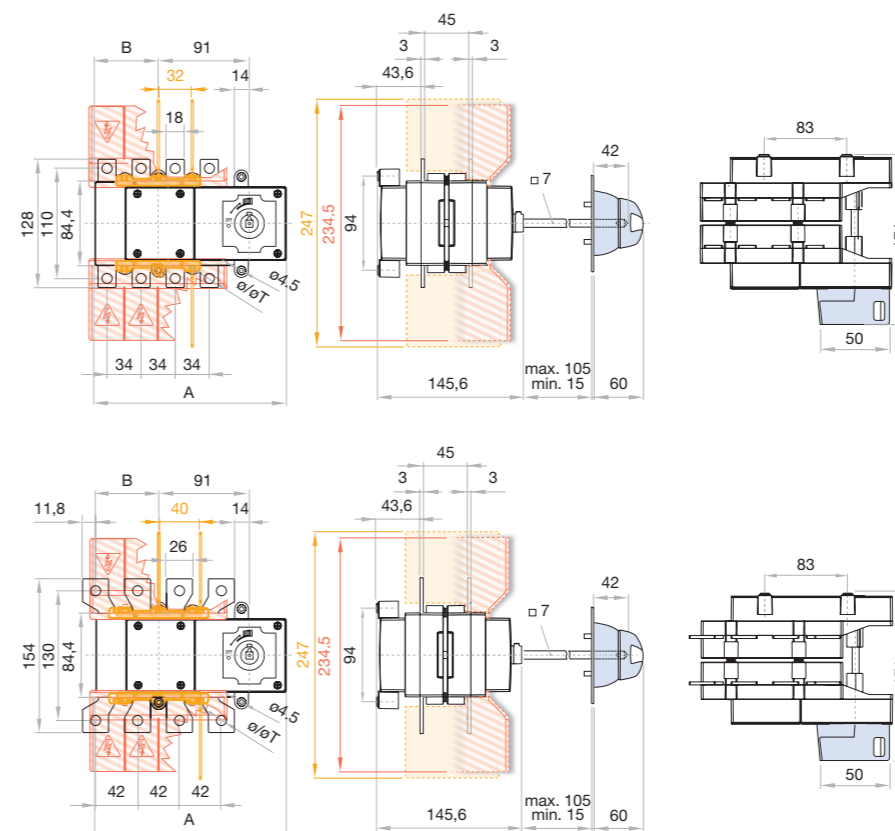
According to IEC 60947-3

Rated thermal current in ambient at	40 °C	A	125	160	200
	50 °C	A	125	160	200
	60 °C	A	125	160	200
Rated insulation voltage	Ui	V	1000	1000	1000
Rated impulse withstand voltage	Uimp	kV	8	8	8
AC rated operational current <sup>*(1)</sup>	Ue 400V AC21A	A	125	160	200
	Ue 400V AC22A	A	125	160	200
	Ue 400V AC23A	A	125	160	160
Rated breaking capacity	400V AC23	A	1000	1280	1280
Rated making capacity	400V AC23	A	1250	1600	1600

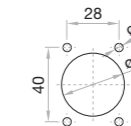
<sup>\*(1)</sup> Other voltages and / or utilization categories. Please consult  
<sup>\*(2)</sup> Without limiting protective device (short-circuit maintained 50... 100 ms.)

Short - circuit behaviour	Rated short-circuit making capacity <sup>*(2)</sup>	Icm kA (peak)	13	13	13
	Rated short-time withstand current (1sec.)	Icw kA rms	7	7	7
	Number of mechanical operations (according to the standards, for other values please consult)	Cycles	8000	8000	8000
Maximum weight 6P		Kg	1,8	1,8	1,9
Maximum weight 8P		Kg	2,1	2,1	2,2

## Dimensions (mm)



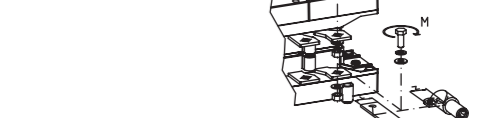
Door drilling for external handle



	A	B	ø	S max (Cu)	H max (Cu)	L max (Cu)	M			
125 A	181	192	53	64	10	95	5	25	M8	13

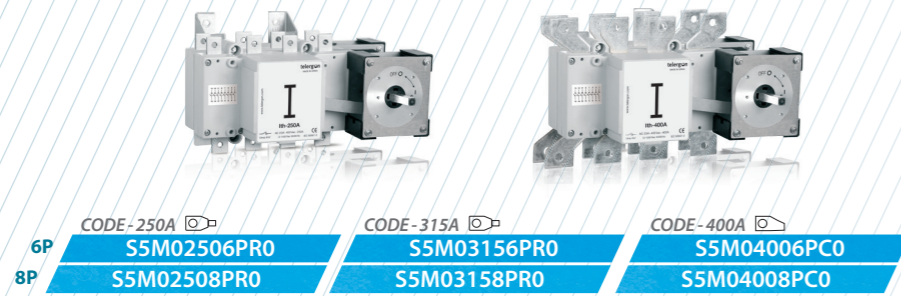


	A	B	ø	S max (Cu)	Z max	H max (Cu)	L max (Cu)	M			
200 A	181	192	53	64	10	120	30	5	30	M10	18

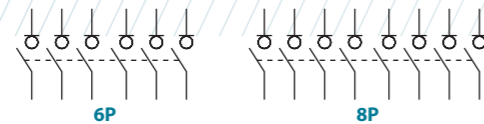


# S5M AC Switch - disconnecter base mounting 6P - 8P

Size 1  
A 250|315|400



	CODE-250A	CODE-315A	CODE-400A
6P	S5M02506PRO	S5M03156PRO	S5M04006PC0
8P	S5M02508PRO	S5M03158PRO	S5M04008PC0



## Accessories

- Direct handle**  
 CODE DS-LI12
- External handle** included shaft <sup>\*(e1)</sup>  
 IP65  
 CODE DS-LA12
- External handle** without shaft  
 IP65  
 CODE DS-LA15
- Emergency external handle** included shaft <sup>\*(e1)</sup>  
 IP65  
 CODE DS-LR12
- Terminal protection** <sup>\*(f)</sup>  
 CODE DS-CU12  
 (1 unit for input or output only frontal side)
- Terminal shrouds** <sup>\*(f)</sup>  
 CODE DS-CU11  
 (1 kit for input or output only frontal side)
- Phase barrier** <sup>\*(f)</sup>  
 6P DS-PB12 DS-PB14  
 8P DS-PB11 DS-PB13  
 (1 kit for input or output)  
<sup>\*(f)</sup> These accessories aren't compatible with each other.
- Safety key lock devices**  
 Simple CODE DS-CB12  
 Double CODE DS-CF11  
 For external handle, lock the handle by means of a key in position "OFF" (under request, in "ON"), the key can only be removed with the handle locked.
- Shafts**  
 Standard shaft included <sup>\*(e1)</sup>  
 L (mm) | P (mm)  
 277 | 288... 422
- Auxiliary contacts**  
 1NO+1NC CODE DS-AU11  
 2NO+2NC CODE DS-AU12  
 Ie = 16 A (resistive loads)  
 4 A (inductive loads) at 250 Vac.

## Technical information



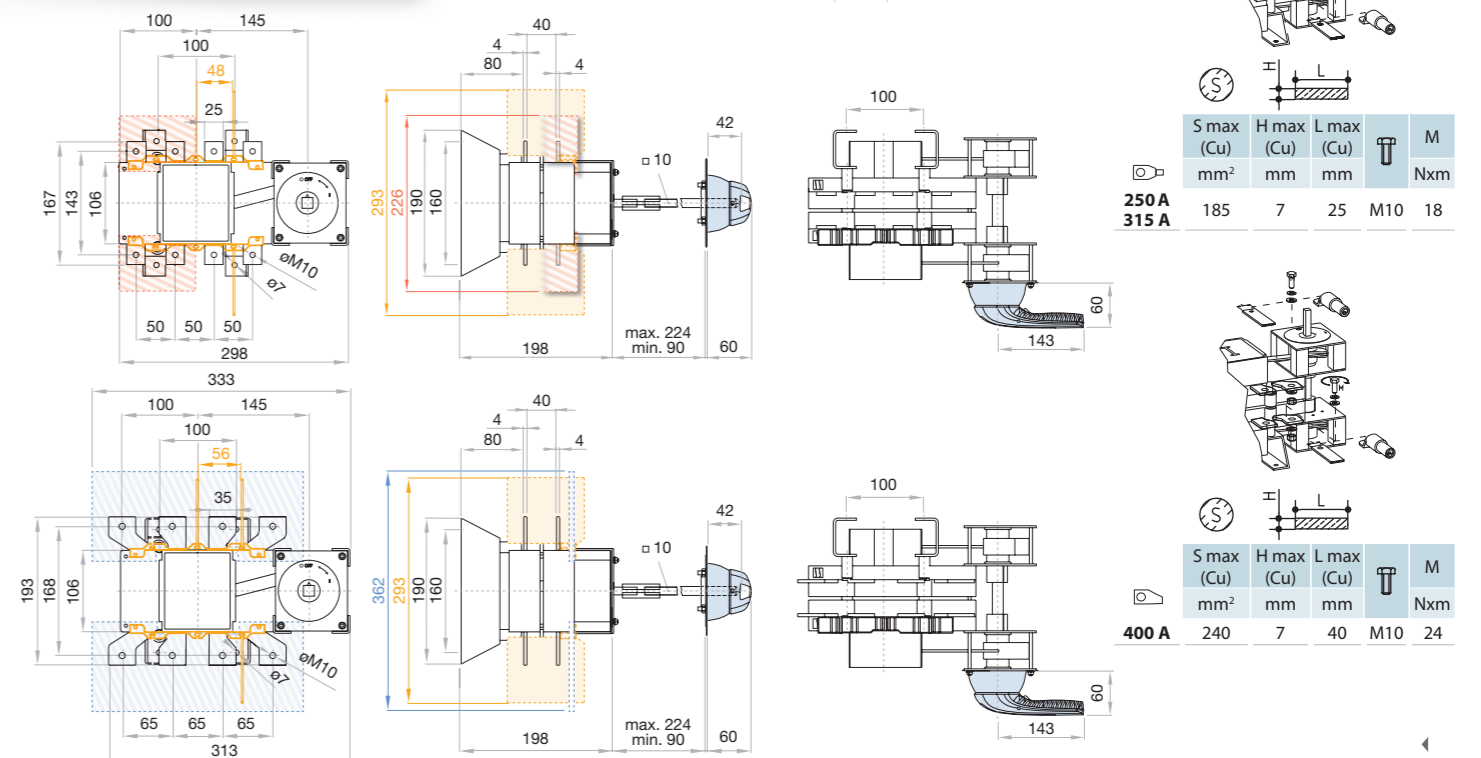
According to IEC 60947-3

			250	315	400	
Rated thermal current in ambient at	Ith	40 °C	A	250	315	400
		50 °C	A	250	315	400
		60 °C	A	250	315	320
Rated insulation voltage	Ui	V	1000	1000	1000	
Rated impulse withstand voltage	Uimp	kV	8	8	8	
AC rated operational current <sup>*(1)</sup>	Ie	Ue 400V AC21A	A	250	315	400
		Ue 400V AC22A	A	250	315	400
		Ue 400V AC23A	A	250	315	400
Rated breaking capacity		400V AC23	A	2000	2520	3200
Rated making capacity		400V AC23	A	2500	3150	4000

			250	315	400
<b>Short - circuit behaviour</b>					
Rated short-circuit making capacity <sup>*(2)</sup>	Icm	kA (peak)	20	20	20
Rated short-time withstand current (1sec.)	Icw	kA rms	12	12	12
<b>Mechanical features</b>					
Number of mechanical operations (according to the standards, for other values please consult)	Cycles		8000	8000	5000
Maximum weight 6P		Kg	5,5	5,5	5,7
Maximum weight 8P		Kg	5,8	5,8	6

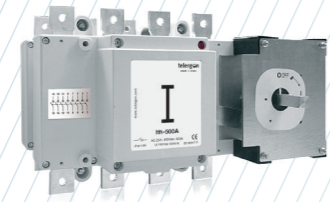
<sup>\*(1)</sup> Other voltages and / or utilization categories. Please consult  
<sup>\*(2)</sup> Without limiting protective device (short-circuit maintained 50... 100 ms.)

## Dimensions (mm)

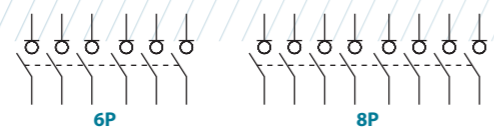


# S5M AC Switch - disconnecter base mounting 6P - 8P

Size 2  
A 500|630



CODE-500A CODE-630A   
 6P S5M05006PR0 S5M06306PR0  
 8P S5M05008PR0 S5M06308PR0



## Accessories

**Direct handle**  
CODE DS-LI22

**External handle** included shaft <sup>\*(e1)</sup>  
IP65  
CODE DS-LA22

**Emergency external handle** included shaft <sup>\*(e1)</sup>  
IP65  
CODE DS-LR22

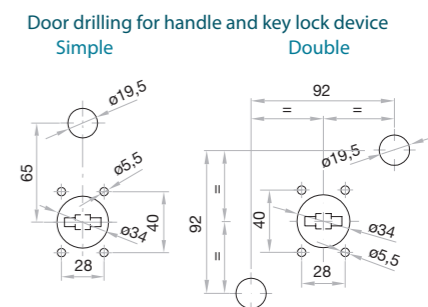
**Shafts**  
**Standard shaft** included <sup>\*(e1)</sup>  
L (mm) 239 P (mm) 325...490

**Auxiliary contacts**  
1NO+1NC CODE DS-AU11  
2NO+2NC CODE DS-AU12  
Ie = 16 A (resistive loads)  
4 A (inductive loads) at 250 Vac.

**Terminal shrouds <sup>\*(f)</sup>**  
CODE DS-CU21  
(1 kit for input or output only frontal side)

**Phase barrier <sup>\*(f)</sup>**  
6P DS-PB22 8P DS-PB21  
(1 kit for input or output)  
<sup>\*(f)</sup> These accessories aren't compatible with each other.

**Safety key lock devices**  
Simple CODE DS-CB21  
Double CODE DS-CF21  
For external handle, lock the handle by means of a key in position "OFF" (under request, in "ON"), the key can only be removed with the handle locked



## Technical information



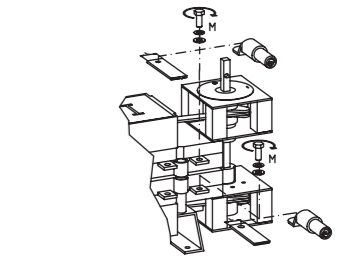
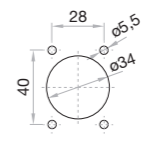
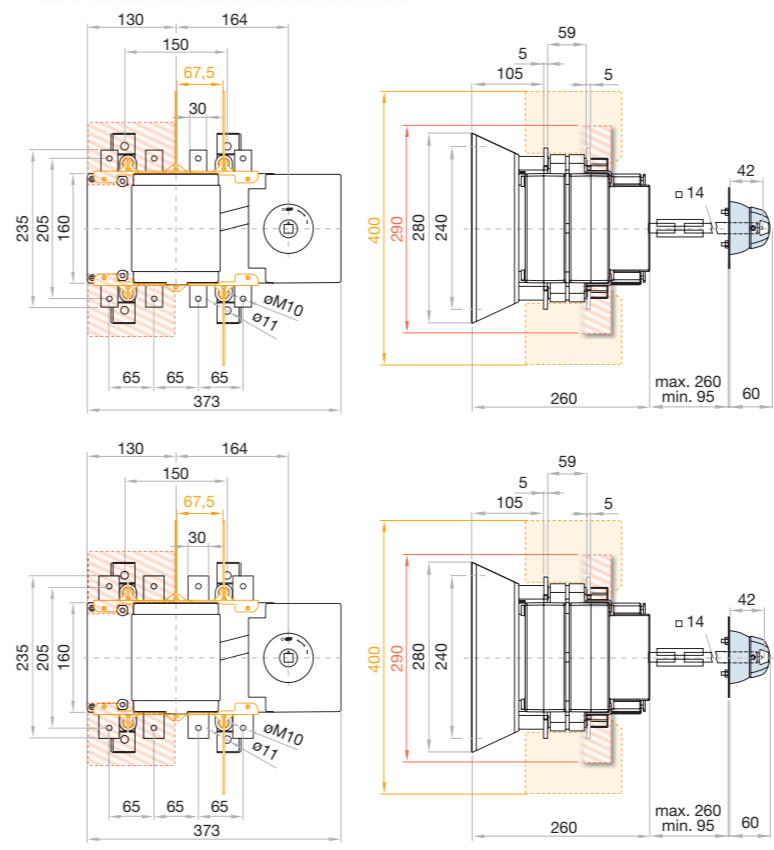
According to IEC 60947-3

		500		630	
Rated thermal current in ambient at	40 °C	A	500	630	
	50 °C	A	500	630	
	60 °C	A	500	630	
Rated insulation voltage	Ui	V	1000	1000	
Rated impulse withstand voltage	Uimp	kV	12	12	
AC rated operational current <sup>*(1)</sup> (Rated operational frequency 50/60 Hz)	Ue 400V AC21A	A	500	630	
	Ue 400V AC22A	A	500	630	
	Ue 400V AC23A	A	500	630	
Rated breaking capacity	400V AC23	A	4000	5000	
Rated making capacity	400V AC23	A	5000	6300	

		500		630	
<b>Short - circuit behaviour</b>					
Rated short-circuit making capacity <sup>*(2)</sup>	Icm kA (peak)		26	26	
Rated short-time withstand current (1sec.)	Icw kA rms		16	16	
<b>Mechanical features</b>					
Number of mechanical operations (according to the standards, for other values please consult)	Cycles		5000	5000	
Maximum weight 6P			12,3	12,3	
Maximum weight 8P			13	13	

<sup>\*(1)</sup> Other voltages and / or utilization categories. Please consult  
<sup>\*(2)</sup> Without limiting protective device (short-circuit maintained 50... 100 ms.)

## Dimensions (mm)



S max (Cu)	H max (Cu)	L max (Cu)	M		
mm <sup>2</sup>	mm	mm	Nxm		
<b>500 A</b>	2x185	6	40	M10	24

S max (Cu)	H max (Cu)	L max (Cu)	M		
mm <sup>2</sup>	mm	mm	Nxm		
<b>630 A</b>	2x240	2x5	40	M10	24

# S5M AC Switch - disconnecter base mounting 6P - 8P

Size 3  
A 800|1000

CODE-800A CODE-1000A

6P	S5M08006PRO	S5M10006PC0
8P	S5M08008PRO	S5M10008PC0

## Accessories

**Direct handle**  
CODE DS-LI41

**External handle** included shaft <sup>\*(e1)</sup>  
IP65  
CODE DS-LA41

**External handle** without shaft  
IP65  
CODE DS-LA43

**Emergency external handle** included shaft <sup>\*(e1)</sup>  
IP65  
CODE DS-LR41

**Terminal shrouds <sup>\*(T)</sup>**  
CODE DS-CU31  
(1 kit for input or output only frontal side)

**Phase barrier <sup>\*(T)</sup>**

6P	DS-PB32	DS-PB31
8P		

(1 kit for input or output)  
<sup>\*(T)</sup> These accessories aren't compatible with each other.

**Safety key lock devices**

Simple CODE DS-CB41  
Double CODE DS-CF41

For external handle, lock the handle by means of a key in position "OFF" (under request, in "ON"), the key can only be removed with the handle locked

Door drilling for handle and key lock device

Simple	Double
--------	--------

**Shafts**

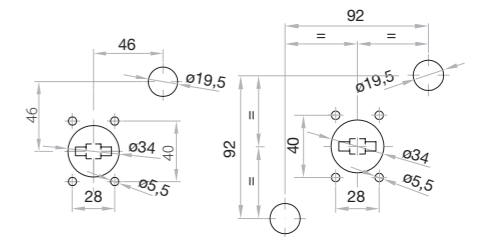
Standard shaft included <sup>\*(e1)</sup>

L (mm)	P (mm)
239	408... 573

**Auxiliary contacts**

1NO+1NC CODE DS-AU11  
2NO+2NC CODE DS-AU12

Ie = 16 A (resistive loads)  
4 A (inductive loads) at 250 Vac.



## Technical information



According to IEC 60947-3

		800		1000	
Rated thermal current in ambient at	40 °C	A	800	1000	
	50 °C	A	800	1000	
	60 °C	A	800	900	
Rated insulation voltage	Ui	V	1000	1000	
Rated impulse withstand voltage	Uimp	kV	12	12	
AC rated operational current <sup>*(1)</sup>	Ue 400V AC21A	A	800	1000	
	Ue 400V AC22A	A	800	1000	
(Rated operational frequency 50/60 Hz)	Ue 400V AC23A	A	800	1000	
Rated breaking capacity	400V AC23	A	6400	8000	
Rated making capacity	400V AC23	A	8000	10000	

**Short - circuit behaviour**

	800	1000	
Rated short-circuit making capacity <sup>*(2)</sup>	Icm kA (peak)	60	60
Rated short-time withstand current (1sec.)	Icw kA rms	25	25

**Mechanical features**

	Cycles	3000	3000
Number of mechanical operations (according to the standards, for other values please consult)			
Maximum weight 6P		18,5	18,5
Maximum weight 8P		20	20

<sup>\*(1)</sup> Other voltages and / or utilization categories. Please consult  
<sup>\*(2)</sup> Without limiting protective device (short-circuit maintained 50... 100 ms.)

## Dimensions (mm)

Door drilling for external handle

6P: 150, 193, 150, 72,5, 40, 75, 75, 75, 422, 290, 260, 190, 108, 8, 78, 8, 428, 340, 280, 240, 42, 14, max. 260, min. 95, 60, 396, 60

8P: 150, 193, 150, 72,5, 40, 75, 75, 75, 422, 290, 260, 190, 108, 8, 78, 8, 428, 340, 280, 240, 42, 14, max. 260, min. 95, 60, 396, 60

	S max (Cu)	H max (Cu)	L max (Cu)	T	M
	mm <sup>2</sup>	mm	mm		Nxm
800 A	2x240	2x10	50	M14	45
1000 A	2x300	2x10	50	M14	45

