

CTR₂ Metal enclosed compact changeover switch IP65

3P - 3P+N

Size 00

A 63|80|100|125



Accessories



» External handle included shaft
CODE DCELAB1



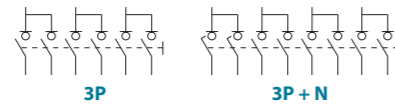
» Auxiliary contacts
1NO+1NC CODE DCEAUB1
I_e = 0,1 A (resistive) at 125 Vac.



» Phase barrier
3P CODE DCECUB1
4P CODE DCECUB2
(1 kit for input or output)



	CODE-63A	CODE-80A	CODE-100A	CODE-125A
3P	CTR2EC00633PB	CTR2EC00803PB	CTR2EC01003PS	CTR2EC01253PS
3P+N	CTR2EC00633NB	CTR2EC00803NB	CTR2EC01003NS	CTR2EC01253NS



Patent pending
EP18382154

Technical information



According to IEC 60947-3
IEC 61439-2

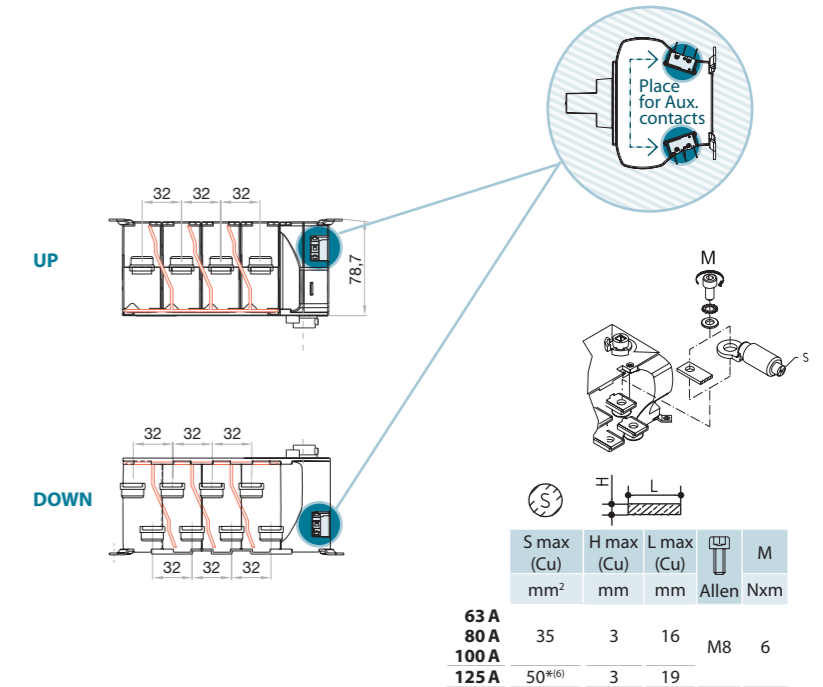
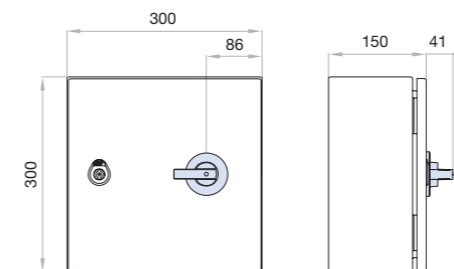
			63	80	100	125	
Rated thermal current I _{th} in ambient at	40°C	A	63	80	100	125	
	50°C	A	63	80	100	125	
	60°C	A	63	80	100	125	
Rated insulation voltage	U _i	V	1000	1000	1000	1000	
Rated impulse withstand voltage	U _{imp}	kV	8	8	8	8	
AC rated operational current ^{(*)1}	U _e 400V	AC21A	A	63	80	100	125
		AC22A	A	63	80	100	125
		AC23A	A	63	80	100	125
Rated breaking capacity	400V, cos φ = 0,35-0,45	A	320	640	800	800	
	400V, cos φ = 0,45		400	800	1000	1000	

^{(*)1} Please, inquire for other voltages and/or utilization categories

^{(*)2} Without limiting protective device (short-circuit maintained 50... 100ms)

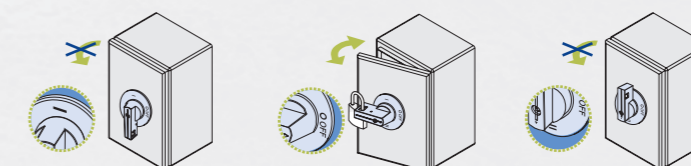
			63	80	100	125
Short-circuit behaviour						
Rated short-circuit making capacity ^{(*)2}	I _{cm}	kA (peak)	1,5	1,5	2,9	2,9
Rated short-time withstand current (1s)	I _{cw}	kA rms	1	1	2	2
Connecting capacity						
Number of mechanical operations (according to the standards, for other values please consult)	Cycles		10000	10000	10000	8000
Maximum weight (3/4 poles)	Kg				Consult	

Dimensions (mm)



	S max (Cu) mm ²	H max (Cu) mm	L max (Cu) mm	Allen NxM	M
63 A					
80 A	35	3	16	M8	6
100 A					
125 A	50 ^{(*)6}	3	19		

^{(*)6} Use phase barriers in order to keep the clearance in air distances.

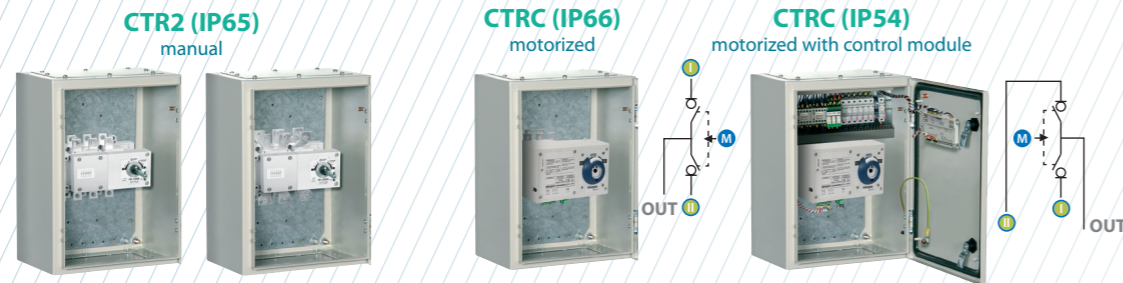


Standard supply CTR₂

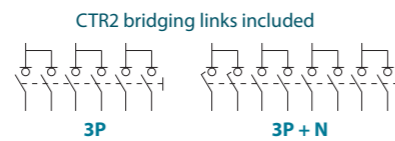
CTR₂ | CTRC Metal enclosed transfer switch IP54-IP66

3P - 3P+N

Size 0
A 125|160|200



	CODE-125A	CODE-160A	CODE-200A	CODE-200A
CTR2 (IP65) manual	3P CTR2FC01253PS CTR2FC01253NS	3P CTR2FC01603PS CTR2FC01603NS	3P CTR2FC02003PS CTR2FC02003NS	3P+N CTR2FC02003PS CTR2FC02003NS
CTR2 (IP66) motorized	3P CTR2FC01253PSAN CTR2FC01253NSAN	3P CTR2FC01603PSAN CTR2FC01603NSAN	3P+N CTR2FC02003PSAN CTR2FC02003NSAN	-
CTR2 (IP54) with control module	3P+N CTR2FC01253NSBJ	-	3P+N CTR2FC02003NSBJ	-



Technical information

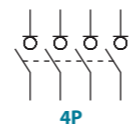


According to IEC 60947-3
IEC 61439-2

			125	160	200
Rated thermal current	I _{th} in ambient at 40° C	A	125	160	200
Rated insulation voltage	U _i	V	1000	1000	1000
Rated impulse withstand voltage	U _{imp}	kV	8	8	8
AC Rated operational current ^{(*)1}	I _e U _e 400V AC21A	A	125	160	200
(Rated operational frequency 50/60 Hz)	U _e 400V AC22A	A	125	160	200
	U _e 400V AC23A	A	125	160	160

^{(*)1} Other voltages and / or utilization categories. Please consult
^{(*)2} Without limiting protective device (short-circuit maintained 50 ms. - 100 ms.)
^{(*)3} Please consult us for CTRC motorized operations

			125	160	200
Rated breaking capacity	400V AC22	A	375	480	600
Rated making capacity	400V AC22	A	375	480	600
Short - circuit behaviour					
Short - circuit making capacity ^{(*)2}	I _{cm}	kA (peak)	13	13	13
Short - time withstand current (1 sec.)	I _{cw}	kA rms	7	7	7
Number of mechanical operations (according to the standards, for other values please consult) CTR2 ^{(*)3}	Cycles		8000	8000	8000
Maximum weight (3/4 poles)		Kg	Consult		



Also available 4P changeover switches under request, please consult

Accessories



» **External handle** included in CTR2
IP65
CODE DSLAN01



» **Auxiliary contacts**
1NO+1NC CODE DS-AU11
2NO+2NC CODE DS-AU12
I_e = 16 A (resistive loads)
4 A (inductive loads) at 250 Vac.



» **Terminal shrouds^{(*)1}** for CTR2

	UP 3P (1 unit)	DOWN 3P (1 unit)	UP OR DOWN 4P (1 unit)
DS-CU02	DS-CU03	DS-CU04	
DS-CU05	DS-CU06	DS-CU07	

(Only frontal side)



» **Phase barrier^{(*)1}** for CTR2

	3P	4P
DS-PB01	DS-PB02	
DS-PB04	DS-PB03	

(1 kit for input or output)

^{(*)1} These accessories aren't compatible with each other



» **Bridging links** included

CODE DSLPC03 (4 units)

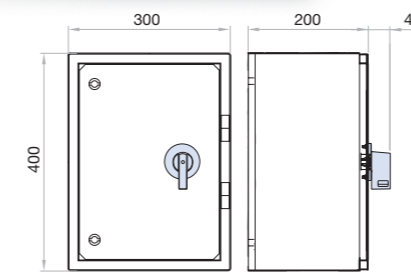


» **Safety key lock device** for CTR2

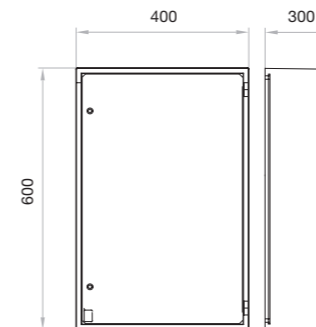
Simple CODE DSLCBB1
Double CODE DSLCEB1

For external handle, lock the handle by means of a key in position "OFF" (under request, in "ON"), the key can only be removed with the handle locked

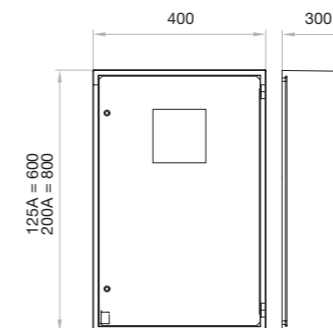
Dimensions (mm)



CTR2 manual



CTRC motorized

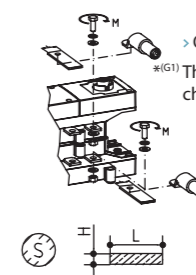


CTRC motorized with control module



» **Control module^{(*)1}**

- » LCD graphic screen
 - » 3 analog inputs for resistive sensors:
 - Oil pressure
 - Coolant temperature
 - Fuel level
 - » 5 + 3 digital inputs:
 - 4 programmable, negative
 - 3 programmable, negative, alternative to resistive sensors
 - 1 emergency stop button, positive
 - » 6 digital outputs:
 - 6 positive static outputs protected
 - » Operation with universal battery 12-24 Vdc
- ^{(*)1} The control module and its features are subject to change, please consult



	S max (Cu)	H max (Cu)	L max (Cu)	T	M
CTR2 125 A	95	5	25	M8	13
CTR2 160 A	120	5	30	M10	18

	S max (Cu)	Z max	H max (Cu)	L max (Cu)	T	M
CTRC 125 A	240	31	2x5	30	M10	24
CTRC 200 A						



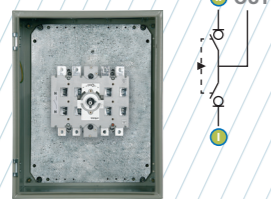
Standard supply CTR2

CTR₂ | CTRC Metal enclosed transfer switch IP54-IP66

3P - 3P+N

Size 1
A 200|250|315|400

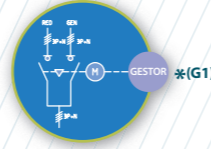
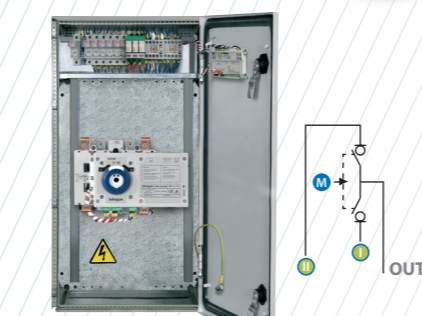
CTR₂ (IP65)
manual



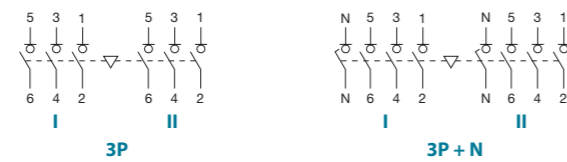
CTRC (IP66)
motorized



CTRC (IP54)
motorized with control module



	CODE-200A	CODE-250A	CODE-315A	CODE-400A
CTR₂ (IP65) manual	CTR2CC02003PS CTR2CC02003NS	CTR2CC02503PS CTR2CC02503NS	CTR2CC03153PS CTR2CC03153NS	CTR2CC04003PS CTR2CC04003NS
CTRC (IP66) motorized	CTRCCC02003PSAN CTRCCC02003NSAN	CTRCCC02503PSAN CTRCCC02503NSAN	CTRCCC03153PSAO CTRCCC03153NSAO	CTRCCC04003PSAO CTRCCC04003NSAO
CTRC (IP54) motorized with control module	-	CTRCCC02503NSBJ	-	CTRCCC04003NSBK



Accessories



» **External handle** included in CTR₂
IP65
CODE DCCLA11



» **Auxiliary contacts**
1NO+1NC CODE D5LAU01
2NO+2NC CODE D5LAU02
Ie = 16 A (resistive loads)
4 A (inductive loads) at 250 Vac.



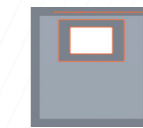
» **Terminal shrouds** for CTR₂

Inputs	Common output			
POS. I 3P	POS. II 3P	POS. I&II 3P+N	3P	3P+N
DM2CU12	DM2CU11	DM2CU13	DCCCU11	DCCCU12



» **Safety key lock device** for CTR₂
Simple CODE D5LCBB1
Double CODE D5LCEB1

For external handle, lock the handle by means of a key in position "OFF" (under request, in "ON"), the key can only be removed with the handle locked

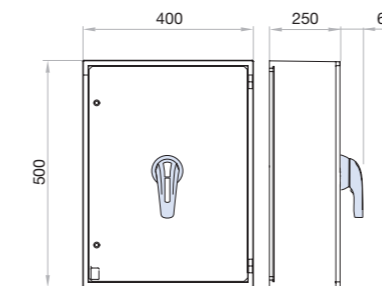


» **Control module***(G1)

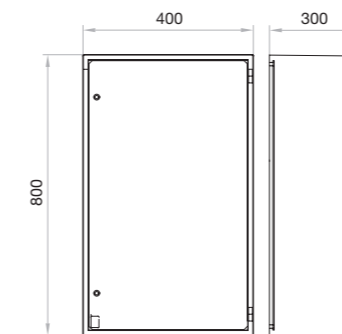
- » LCD graphic screen
- » 3 analog inputs for resistive sensors:
 - Oil pressure
 - Coolant temperature
 - Fuel level
- » 5 + 3 digital inputs:
 - 4 programmable, negative
 - 3 programmable, negative, alternative to resistive sensors
 - 1 emergency stop button, positive
- » 6 digital outputs:
 - 6 positive static outputs protected
- » Operation with universal battery 12-24 Vdc

*(G1) The control module and its features are subject to change, please consult

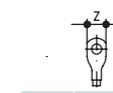
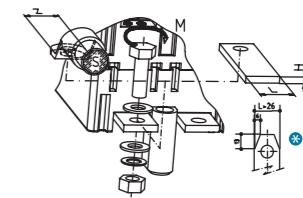
Dimensions (mm)



CTR₂
manual



CTRC
motorized with control module



S max (Cu) mm ²	Z max	H max (Cu) mm	L max (Cu) mm	M
240	31	2x5	30	M10 24

Technical information

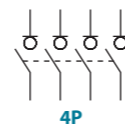


According to IEC 60947-3
IEC 61439-2

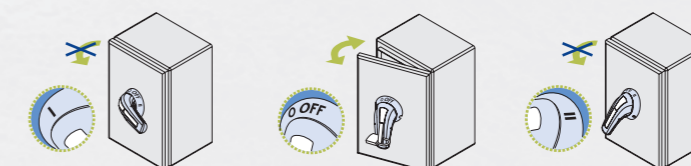
			200	250	315	400
Rated thermal current I _{th} in ambient at 40° C	A		200	250	315	400
Rated insulation voltage U _i	V		1000	1000	1000	1000
Rated impulse withstand voltage U _{imp}	kV		8	8	8	8
AC Rated operational current ^{*(1)}	I _e U _e 400V AC21A	A	200	250	315	400
(Rated operational frequency 50/60 Hz)	U _e 400V AC22A	A	200	250	315	400 ^{*(4)}

^{*(1)} Other voltages and / or utilization categories. Please consult
^{*(2)} Without limiting protective device (short-circuit maintained 50 ms. - 100 ms.)
^{*(3)} Please consult us for CTRC motorized operations
^{*(4)} AC22B

			200	250	315	400
Rated breaking capacity 400V AC22	A		600	750	945	1200
Rated making capacity 400V AC22	A		600	750	945	1200
Short - circuit behaviour						
Short - circuit making capacity ^{*(2)}	I _{cm}	kA (peak)	12	12	12	12
Short - time withstand current (1 sec.)	I _{cw}	kA rms	8	8	8	8
Number of mechanical operations (according to the standards, for other values please consult) CTR ₂ ^{*(3)}	Cycles		8000	8000	8000	5000
Maximum weight (3/4 poles)	Kg		Consult			



Also available 4P changeover switches under request, please consult



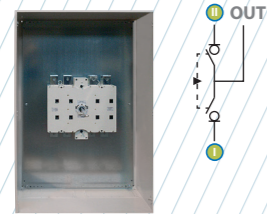
Standard supply CTR₂

CTR₂ | CTRC Metal enclosed transfer switch IP54-IP66

3P - 3P+N

Size 2
A 500|630|800

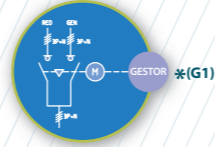
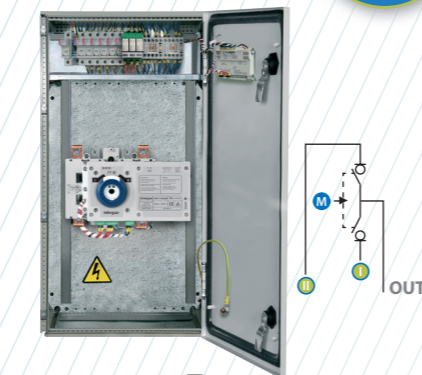
CTR₂ (IP65)
manual



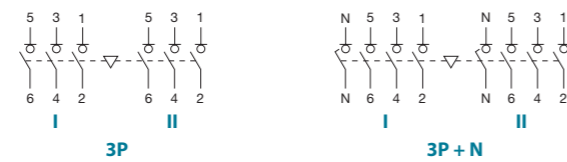
CTRC (IP66)
motorized



CTRC (IP54)
motorized with control module



	CODE - 500A	CODE - 630A	CODE - 800A
CTR₂ (IP65) manual	CTR2CC05003PS CTR2CC05003NS	CTR2CC06303PS CTR2CC06303NS	CTR2CC08003PS CTR2CC08003NS
CTRC (IP66) motorized	CTRCCC05003PSAO CTRCCC05003NSAO	CTRCCC06303PSAO CTRCCC06303NSAO	CTRCCC08003PSAO CTRCCC08003NSAO
CTRC (IP54) motorized with control module	-	CTRCCC06303NSBK	-



Accessories



» **External handle** included in CTR₂
IP65
CODE DCCLA21



» **Auxiliary contacts**
1NO+1NC CODE D5LAU01
2NO+2NC CODE D5LAU02
Ie = 16 A (resistive loads)
4 A (inductive loads) at 250 Vac.



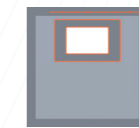
» **Terminal shrouds** for CTR₂

POS. I 3P	Inputs POS. II 3P	POS. I&II 3P+N	Common output 3P	3P+N
DM2CU22	DM2CU21	DM2CU23	DCCCU21	DCCCU22



» **Safety key lock device** for CTR₂
Simple CODE D5LCB21
Double CODE D5LCF21

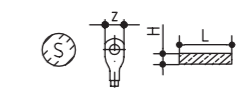
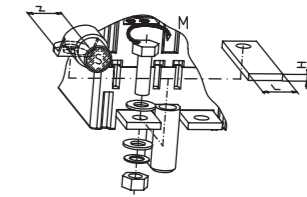
For external handle, lock the handle by means of a key in position "OFF" (under request, in "ON"), the key can only be removed with the handle locked



» Control module*(G1)

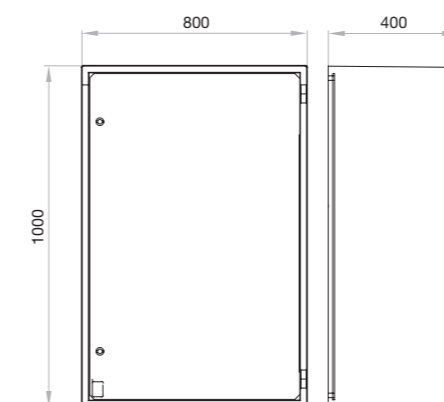
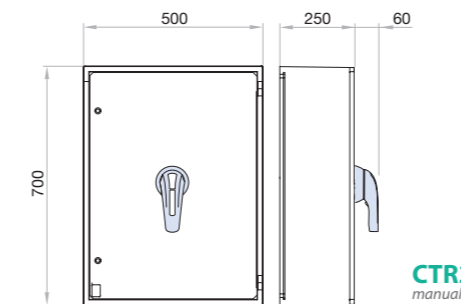
- » LCD graphic screen
- » 3 analog inputs for resistive sensors:
 - Oil pressure
 - Coolant temperature
 - Fuel level
- » 5 + 3 digital inputs:
 - 4 programmable, negative
 - 3 programmable, negative, alternative to resistive sensors
 - 1 emergency stop button, positive
- » 6 digital outputs:
 - 6 positive static outputs protected
- » Operation with universal battery 12-24 Vdc

*(G1) The control module and its features are subject to change, please consult



S max (Cu) mm ²	Z max	H max (Cu) mm	L max (Cu) mm	T	M
2x240	45	2x6	45	M12	45

Dimensions (mm)



Technical information

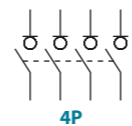


According to IEC 60947-3
IEC 61439-2

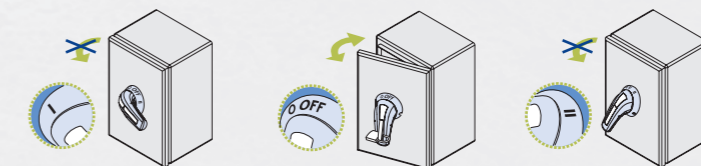
			500	630	800
Rated thermal current	I _{th} in ambient at 40° C	A	500	630	800
Rated insulation voltage	U _i	V	1000	1000	1000
Rated impulse withstand voltage	U _{imp}	kV	12	12	12
AC Rated operational current ^{*(1)}	I _e U _e 400V AC21A	A	500	630	800
(Rated operational frequency 50/60 Hz)	U _e 400V AC22B	A	500	630	800

^{*(1)} Other voltages and / or utilization categories. Please consult
^{*(2)} Without limiting protective device (short-circuit maintained 50 ms. - 100 ms.)
^{*(3)} Please consult us for CTRC motorized operations

			500	630	800
Rated breaking capacity	400V AC22	A	1500	1890	2400
Rated making capacity	400V AC22	A	1500	1890	2400
Short - circuit behaviour					
Short - circuit making capacity ^{*(2)}	I _{cm} kA (peak)		20	20	20
Short - time withstand current (1 sec.)	I _{cw} kA rms		13	13	13
Number of mechanical operations (according to the standards, for other values please consult CTR ₂ ^{*(3)})	Cycles		5000	5000	3000
Maximum weight (3/4 poles)		Kg		Consult	



Also available 4P changeover switches under request, please consult



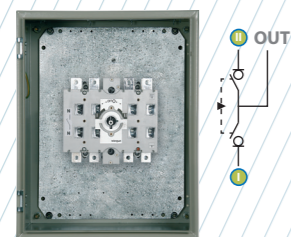
Standard supply CTR₂

CTR₂ | CTRC Metal enclosed transfer switch IP54-IP66

3P - 3P+N

Size 3
A 1000 | 1250

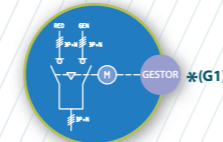
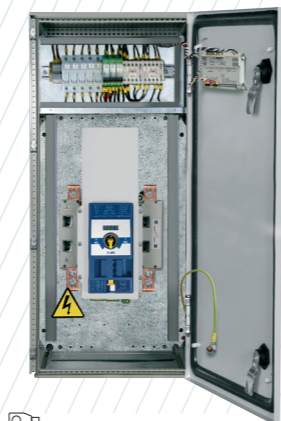
CTR₂ (IP65)
manual



CTR_C (IP66)
motorized



CTR_C (IP54)
motorized with control module



	CODE-1000A	CODE-1250A
CTR ₂ (IP65) manual	CTR2CC10003PS CTR2CC10003NS	CTR2CC12503PS CTR2CC12503NS
CTR _C (IP66) motorized	CTRCCC10003PSAP CTRCCC10003NSAP	CTRCCC12503PSAP CTRCCC12503NSAP
CTR _C (IP54) motorized with control module	CTRCCC10003NSBK	CTRCCC12503NSBK

	3P	3P+N
Terminal diagram I		
Terminal diagram II		

Accessories



» External handle included in CTR₂
IP65
CODE DCCLA31



» Auxiliary contacts
1NO+1NC CODE D5LAU01
2NO+2NC CODE D5LAU02
I_e = 16 A (resistive loads)
4 A (inductive loads) at 250 Vac.



» Terminal shrouds for CTR₂

POS. I	Inputs	POS. II/II	Common output
3P	3P	3P+N	3P
DM2CU32	DM2CU31	DM2CU33	DCCCU31
			DCCCU32



» Safety key lock device for CTR₂
Simple CODE D5LCB31
Double CODE D5LCF31

For external handle, lock the handle by means of a key in position "OFF" (under request, in "ON"), the key can only be removed with the handle locked

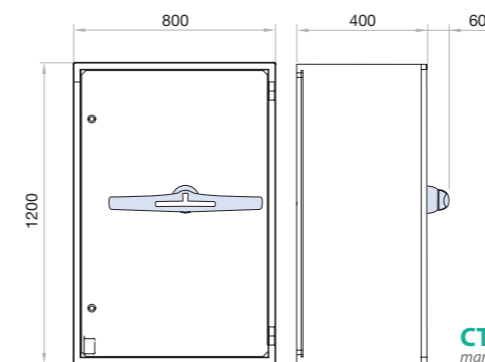


» Control module*(G1)

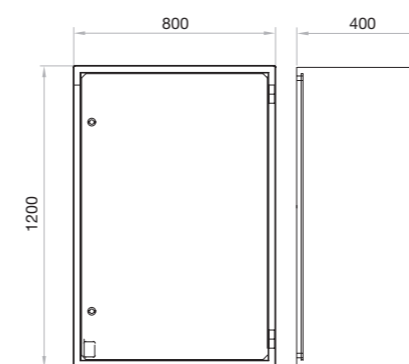
- > LCD graphic screen
- > 3 analog inputs for resistive sensors:
 - Oil pressure
 - Coolant temperature
 - Fuel level
- > 5 + 3 digital inputs:
 - 4 programmable, negative
 - 3 programmable, negative, alternative to resistive sensors
 - 1 emergency stop button, positive
- > 6 digital outputs:
 - 6 positive static outputs protected
- > Operation with universal battery 12-24 Vdc

*(G1) The control module and its features are subject to change, please consult

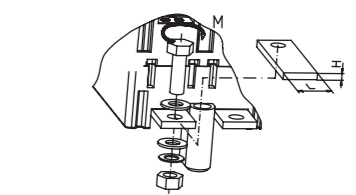
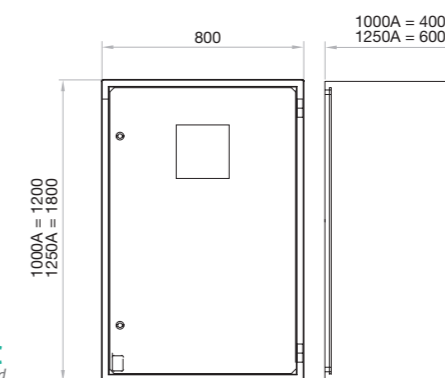
Dimensions (mm)



CTR₂ manual



CTR_C motorized



H max (Cu)	L max (Cu)	M
mm	mm	Nxm
2x10	60	M14 55

Technical information



According to IEC 60947-3
IEC 61439-2

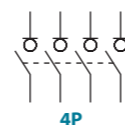
			1000	1250
Rated thermal current I _{th} in ambient at 40° C	A		1000	1250
Rated insulation voltage U _i	V		1000	1000
Rated impulse withstand voltage U _{imp}	kV		12	12
AC Rated operational current ^{*(1)} (Rated operational frequency 50/60 Hz)	I _e U _e 400V AC21A	A	1000	1250
	U _e 400V AC22B	A	1000	1250

*(1) Other voltages and / or utilization categories. Please consult

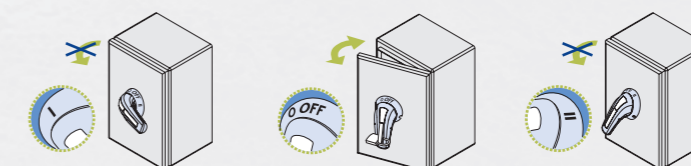
*(2) Without limiting protective device (short-circuit maintained 50 ms - 100 ms).

*(3) Please consult us for CTR_C motorized operations

			1000	1250
Rated breaking capacity 400V AC22	A		3000	3750
Rated making capacity 400V AC22	A		3000	3750
Short - circuit behaviour				
Short - circuit making capacity ^{*(2)} I _{cm}	kA (peak)		32	32
Short - time withstand current (1 sec.) I _{cw}	kA rms		25	25
Number of mechanical operations (according to the standards, for other values please consult) CTR ₂ ^{*(3)}	Cycles		3000	3000
Maximum weight (3/4 poles)	Kg			Consult



Also available 4P changeover switches under request, please consult

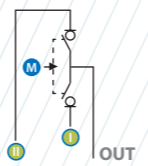
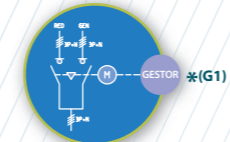
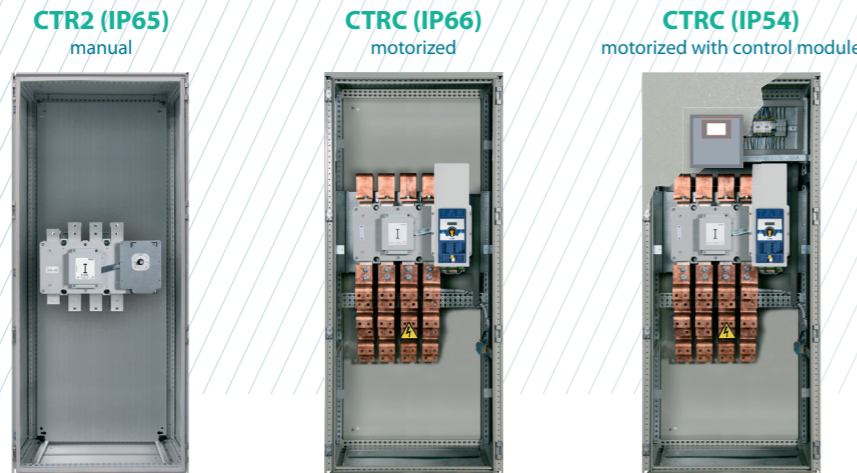


Standard supply CTR₂

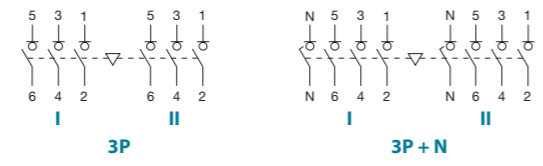
CTR₂ | CTRC Metal enclosed transfer switch IP54-IP66

3P - 3P+N

Size 4
A 1600|1800|2000



	CODE-1600A	CODE-1800A	CODE-2000A
CTR2 (IP65) manual 3P	CTR2FC16003PS	CTR2FC18003PS	CTR2FC20003PD
3P + N	CTR2FC16003NS	CTR2FC18003NS	CTR2FC20003ND
CTRC (IP66) motorized 3P	CTRCFC16003PSAP	CTRCFC18003PSAP	CTRCFC20003PDAP
3P + N	CTRCFC16003NSAP	CTRCFC18003NSAP	CTRCFC20003NDAP
CTRC (IP54) motorized with control module 3P	CTRCFC16003NSBK		CTRCFC20003NDBK
3P + N			



Technical information

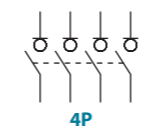


According to IEC 60947-3
IEC 61439-2

		1600	1800	2000
Rated thermal current I _{th} in ambient at 40° C	A	1600	1800	2000
Rated insulation voltage U _i	V	1000	1000	1000
Rated impulse withstand voltage U _{imp}	kV	12	12	12
AC Rated operational current ^{(*)1}	I _e U _e 400V AC21A	A 1600	A 1800	A 2000
(Rated operational frequency 50/60 Hz)	U _e 400V AC22A	A 1600	A 1800	A 2000

		1600	1800	2000
Rated breaking capacity 400V AC22	A	4800	5400	6000
Rated making capacity 400V AC22	A	4800	5400	6000
Short - circuit behaviour				
Short - circuit making capacity ^{(*)2}	I _{cm} kA (peak)	75	75	75
Short - time withstand current (1 sec.)	I _{cw} kA rms	50	50	50
Number of mechanical operations (according to the standards, for other values please consult) CTR ₂ ^{(*)3}	Cycles	3000	3000	3000
Maximum weight (3/4 poles)	Kg	Consultar		

^{(*)1} Other voltages and / or utilization categories. Please consult
^{(*)2} Without limiting protective device (short-circuit maintained 50 ms. - 100 ms.)
^{(*)3} Please consult us for CTRC motorized operations



Also available 4P changeover switches under request, please consult

Accessories



» External handle included in CTR2
IP65
CODE D5LLA31



» Auxiliary contacts
1NO+1NC CODE DS-AU11
2NO+2NC CODE DS-AU12
I_e = 16 A (resistive loads)
4 A (inductive loads) at 250 Vac.



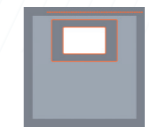
» Terminal shrouds for CTR2
CODE DS-CU41
(1 kit for input or output only frontal side)



» Bridging links for CTR2
CODE D5LPC42 (4 units)

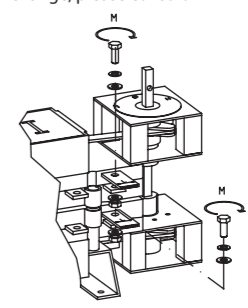
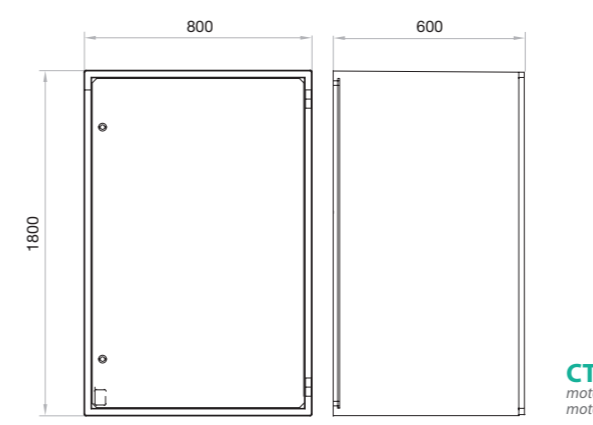
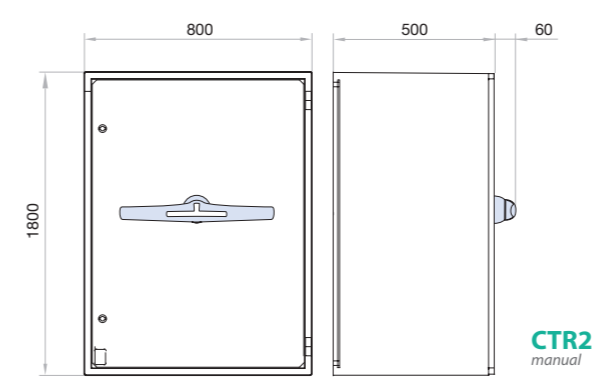


» Safety key lock device for CTR2
Simple CODE D5LCB41
Double CODE D5LCF41
For external handle, lock the handle by means of a key in position "OFF" (under request, in "ON"), the key can only be removed with the handle locked

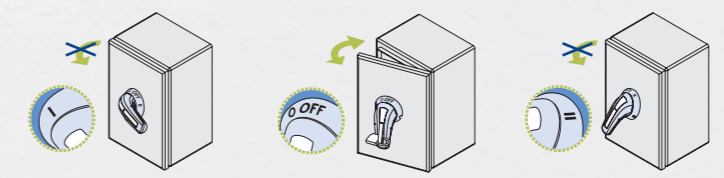


» Control module ^{(*)G1}
 > LCD graphic screen
 > 3 analog inputs for resistive sensors:
 - Oil pressure
 - Coolant temperature
 - Fuel level
 > 5 + 3 digital inputs:
 - 4 programmable, negative
 - 3 programmable, negative, alternative to resistive sensors
 - 1 emergency stop button, positive
 > 6 digital outputs:
 - 6 positive static outputs protected
 > Operation with universal battery 12-24 Vdc
^{(*)G1} The control module and its features are subject to change, please consult

Dimensions (mm)



H max (Cu)	L max (Cu)	T	M
mm	mm		Nxm
2x10	80	M14	55



Standard supply CTR₂

CTR₂ | CTRC Metal enclosed transfer switch IP55

3P - 3P+N

CTR₂ (IP55)
manual



CTRC (IP55)
motorized



Size 5
A 2000|2500|3150

Accessories



» **External handle** included in CTR₂
(Slider bar)
CODE D5LEN51

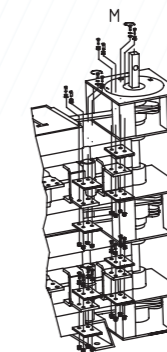


» **Safety key lock device** for CTR₂
Simple CODE D5LCB41
Double CODE D5LCF41

For external handle, lock the handle by means of a key in position "OFF" (under request, in "ON"), the key can only be removed with the handle locked

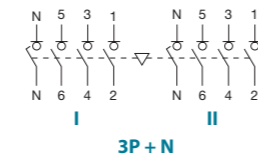
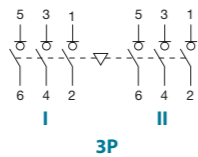


» **Auxiliary contacts**
1NO+1NC CODE DS-AU11
2NO+2NC CODE DS-AU12
I_e = 16 A (resistive loads)
4 A (inductive loads) at 250 Vac.

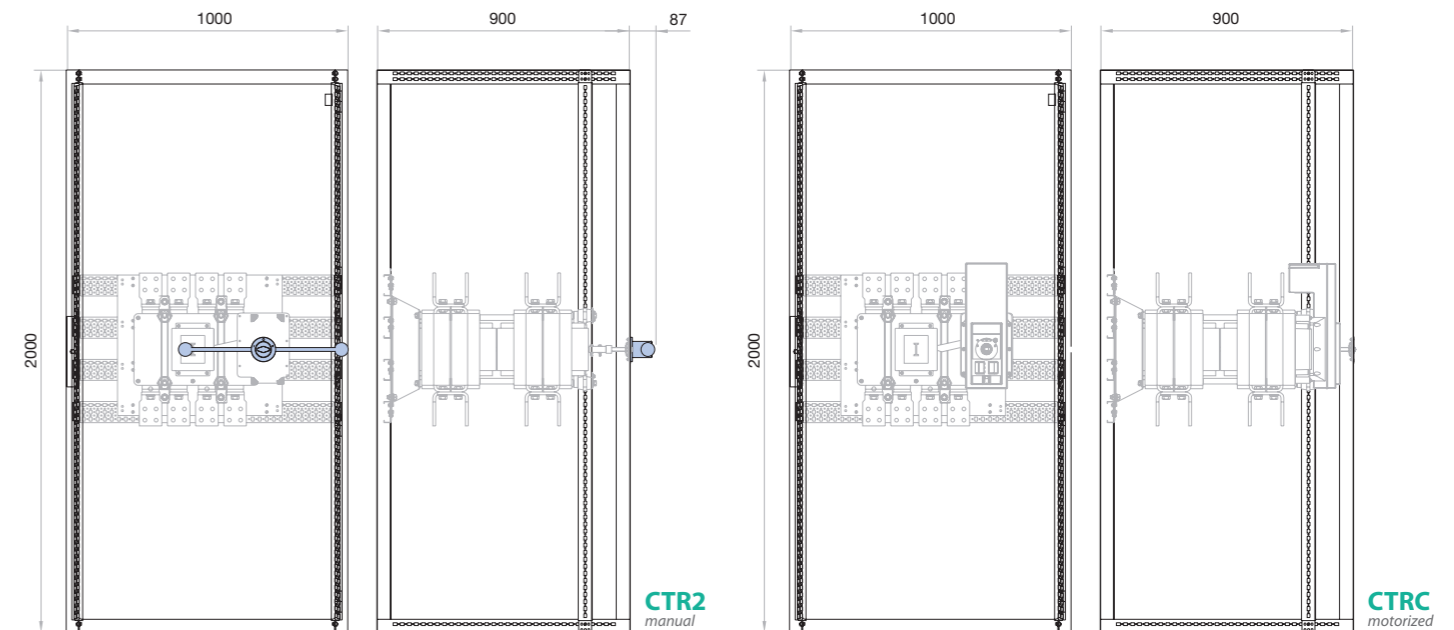


	H max (Cu) mm	L max (Cu) mm	M
2000 A	4x10	80	M12
2500 A		100	45
3150 A			

	CODE-2000A	CODE-2500A	CODE-3150A
CTR₂ (IP55) manual	3P CTR2FC20003PP 3P+N CTR2FC20003NP	3P CTR2FC25003PP 3P+N CTR2FC25003NP	3P CTR2FC31503PP 3P+N CTR2FC31503NP
CTRC (IP55) motorized	3P CTRCFC20003PPAP 3P+N CTRCFC20003NPAP	3P CTRCFC25003PPAP 3P+N CTRCFC25003NPAP	3P CTRCFC31503PPAP 3P+N CTRCFC31503NPAP



Dimensions (mm)



Technical information

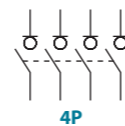


According to IEC 60947-3
IEC 61439-2

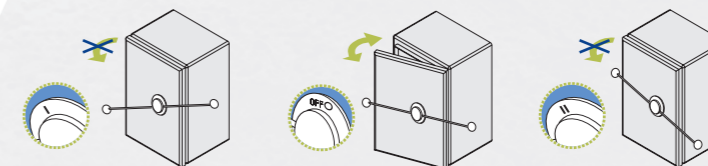
			2000	2500	3150
Rated thermal current I _{th} in ambient at 40° C	A		2000	2500	3150
Rated insulation voltage U _i	V		1000	1000	1000
Rated impulse withstand voltage U _{imp}	kV		8	8	8
AC Rated operational current ^{(*)1}	I _e U _e 400V AC21A	A	2000	2500	3150
(Rated operational frequency 50/60 Hz)	U _e 400V AC22B	A	2000	2500	2500

			2000	2500	3150
Rated breaking capacity 400V AC22	A		6000	7500	9450
Rated making capacity 400V AC22	A		6000	7500	9450
Short - circuit behaviour					
Short - circuit making capacity ^{(*)2}	I _{cm}	kA (peak)	100	100	100
Short - time withstand current (1 sec.)	I _{cw}	kA rms	50	50	50
Number of mechanical operations (according to the standards, for other values please consult) CTR ₂ ^{(*)3}	Cycles		600	600	600
Maximum weight (3/4 poles)		Kg		Consult	

^{(*)1} Other voltages and / or utilization categories. Please consult
^{(*)2} Without limiting protective device (short-circuit maintained 50 ms. - 100 ms.)
^{(*)3} Please consult us for CTRC motorized operations



Also available 4P changeover switches under request, please consult



Standard supply CTR₂